

TECHNICAL MANUAL

ORGANIZATIONAL MAINTENANCE REPAIR PARTS

AND SPECIAL TOOLS LISTS

FOR

RAWIN SETS

AN/GMD-1A (NSN 6660-00-224-6137)

AND

AN/GMD-1B (NSN 6660-00-599-8252)

TECHNICAL MANUAL }
 No. 11-6660-206-20P }

HEADQUARTERS
 DEPARTMENT OF THE ARMY
 WASHINGTON, DC, 31 January 1980

ORGANIZATIONAL MAINTENANCE REPAIR PARTS AND SPECIAL TOOLS LISTS
 FOR

RAWIN SETS

AN/GMD-1A (NSN 6660-00-224-6137)

AND

AN/GMD-1B (NSN 6660-00-599-8252)

REPORTING ERRORS AND RECOMMENDING IMPROVEMENTS

You can help improve this manual. If you find any mistakes or if you know of a way to improve the procedures, please let us know. Mail your letter, DA Form 2028 (Recommended Changes to Publications and Blank Forms), or DA Form 2028-2 located in back of this manual direct to Commander, US Army Communications and Electronics Materiel Readiness Command, ATTN: DRSEL-ME-MQ, Fort Monmouth, NJ 07703.

In either case a reply will be furnished direct to you.

Table of Contents

SECTION		Page	Illus. Figure
	I. Introduction	1	
	II. Repair parts list	5	
GROUP	00 Rawin Set AN/GMD-1()	5	1
	01 Antenna AS-462()/GMD- 1	7	2
	0101 Reflector, antenna (No parts authorized)		
	010101 Mounting assembly, telescope (No parts authorized)		
	0102 Spinner cup and radome assembly	9	3
	010201 Cable assembly, power electrical (W101) (No parts authorized)		
	010202 Motor-generator assembly (No parts authorized)		
	01020201 Generator, AC assembly (G150) (No parts authorized)		
	01020202 Motor assembly (B118) (No parts authorized)		
	02 Cable Assembly, Special Purpose, Electrical CX-1216/U (W901) (No parts authorized)		
	03 Cable Assembly, Special Purpose, Electrical CX-1217/U (W927) (No parts authorized)		
	04 Cable Assembly, Special Purpose, Electrical CX-1492/U (W971) (No parts authorized)		
	05 Cable Assembly, Special Purpose, Electrical CX-1493/U (W941) (No parts authorized)		
	06 Cable Assembly, Special Purpose, Electrical CX-2043/U (W911) (No parts authorized)		
	07 Case Assembly CY-734/GMD-1 (No parts authorized)		
	08 Case Assembly CY-735A/GMD-1 (No parts authorized)		
	09 Case Assembly CY-736/GMD-1 (No parts authorized)		
	10 Case Assembly CY-737A/GMD-1 (No parts authorized)		
	11 Case Assembly CY-1157/GMD-1 (No parts authorized)		
	12 Case Assembly CY-1895/GMD-1 (No parts authorized)		
	13 Antenna Control C-578()/GMD-1	13	4
	1301 Capacitor-resistor board assembly (TB601) (No parts authorized)		
	1302 Capacitor-resistor board assembly (TB602) (No parts authorized)		
	1303 Resistor board assembly (TB603) (No parts authorized)		
	1304 Resistor board assembly (TB604) (No parts authorized)		
	1305 Capacitor-resistor board assembly (TB605) (No parts authorized)		
	1306 SCR switching unit (No parts authorized)		
	1307 Chassis assembly (No parts authorized)		
	14 Control Recorder C-577()/GMD- 1 (No parts authorized)		
	1401 Electrical equipment cabinet	15	5
	1402 Control-recorder assembly	17	6
	140201 Folding table (No parts authorized)		
	140202 Main chassis assembly	19	7
	14020201 Time Type assembly (No parts authorized)		
	14020202 Motor assembly (B101, B102), (No parts authorized)		

* This manual supersedes TM 11-6660-206-20P, 8 November 1971.

GROUP		<i>Page</i>	<i>Illus. Figure</i>
	14020203 Indicator azimuth (No parts authorized)		
	14020204 Indicator elevation (No parts authorized)		
	14020205 Shaft assembly (No parts authorized)		
	14020206 Paper roller assembly (No parts authorized)		
	14020207 Tension unit assembly (No parts authorized)		
	14020208 Print hammer assembly (No parts authorized)		
	14020209 Cam assembly (No parts authorized)		
	14020210 Ribbon printing assembly (No parts authorized)		
	14020211 Azimuth printer assembly (No parts authorized)		
	14020212 Elevation printer assembly (No parts authorized)		
	140203 Panel control assembly	21	8
	140204 Chassis assembly	23	9
15	Ground rod and cable assembly	25	10
16	Telescope M-17 modified	27	11
17	Test Set TS-538()/U (See TM 11-6625-213-20P for parts)		
18	Holder, Cable Reel MT-1421/U (No parts authorized)		
19	Packing kit	29	12
20	Pedestal AB-159()/GMD- 1	31	13
	2001 Housing and frame assembly	35	14
	200101 Swing link assembly (TB302) (No parts authorized)		
	2002 Elevation assembly (No parts authorized)		
	200201 Drive assembly (No parts authorized)		
	200202 Elevation indicator assembly (No parts authorized)		
	200203 Stow lock assembly (No parts authorized)		
	200204 Counter balance assembly (No parts authorized)		
	2003 Azimuth assembly	37	15
	200301 Indicator assembly (No parts authorized)		
	20030101 Indicator assembly, azimuth (No parts authorized)		
	200302 Stow lock assembly (Same as group 200203)		
	200303 Elevation drive assembly (No parts authorized)		
	20030301 Motor generator assembly (No parts authorized)		
	2003030101 Drive assembly (No parts authorized)		
	200304 Turntable assembly (No parts authorized)		
	200305 Contact finger assembly (No parts authorized)		
	200306 Cover assembly (No parts authorized)		
	2004 Cable Assembly, Special Purpose, CX-1285/U (W951) (No parts authorized)		
21	Rawin Receiver R-301()/GMD- 1	41	16
	2101 Cable Assembly RF CG-409/U (W121) (No parts authorized)		
	2102 Cable Assembly RF CG-530/U (W131) (No parts authorized)		
	2103 Mixer stage assembly (No parts authorized)		
	2104 Cable assembly, RF (W501) (No parts authorized)		
	2105 Cable assembly, RF (W502) (No parts authorized)		
	2106 Cable assembly, RF (W104) (No parts authorized)		
	2107 Capacitor-resistor board assembly (TB1001A) (No parts authorized)		
	2108 Capacitor-resistor board assembly (TB1009A) (No parts authorized)		
	2109 Capacitor-resistor board assembly (TB1010A) (No parts authorized)		
	2110 Capacitor-resistor board assembly (TB1012A) (No parts authorized)		
	2111 Capacitor-resistor board assembly (TB1013A) (No parts authorized)		
	2112 Capacitor-resistor board assembly (TB1014A) (No parts authorized)		
	2113 Capacitor-resistor board assembly (TB1015A) (No parts authorized)		
	2114 Tuner RF assembly (No parts authorized)		
	211401 Resistor board assembly (No parts authorized)		
	211402 Oscillator, RF assembly plunger assembly (No parts authorized)		
	2115 Amplifier, IF assembly (No parts authorized)		
	211501 Amplifier, IF chassis assembly (No parts authorized)		
	2116 Receiver, radio panel and chassis assembly (No parts authorized)		
22	Meteorological Data Processing Group OL-192()/GMD-1 (No parts authorized)		
III.	Special tools list (Not applicable)		
IV.	National stock number and part number index	42	

SECTION I

INTRODUCTION

1. Scope

This manual lists spares and repair parts; special tools; special test, measurement, and diagnostic equipment (TMDE), and other special support equipment required for performance of organizational maintenance of the AN/GMD-1A and AN/GMD-IB. It authorizes the requisitioning and issue of spares and repair parts as indicated by the source and maintenance codes.

2. General

This Repair Parts and Special Tools List is divided into the following sections:

a. Section II. Repair Parts List. A list of spares and repair parts authorized for use in the performance of maintenance. The list also includes parts which must be removed for replacement of the authorized parts. Parts lists are composed of functional groups in numeric sequence, with the parts in each group listed in figure and item number sequence.

b. Section III. Special Tools List. Not applicable.

c. Section IV. National Stock Number and Part Number Index. A list, in National item identification number (NHN) sequence, of all National stock numbers (NW) appearing in the listings, followed by a list, in alphameric sequence, of all part numbers appearing in the listings. National stock numbers and part numbers are cross-referenced to each illustration figure and item number appearance.

3. Explanation of Columns

a. Illustration. This column is divided as follows:

(1) *Figure number.* Indicates the figure number of the illustration on which the item is shown.

(2) *Item number.* The number used to identify item called out in out illustration.

b. Source, Maintenance, and Recoverability (SMR) Codes.

(1) *Source code.* Source codes indicate the manner of acquiring support items for maintenance, repair, or overhaul of end items. Source codes are entered in the first and second positions of the Uniform SMR Code format as follows:

<i>Code</i>	<i>Definition</i>
PA-Item procured and stocked for anticipated or known usage.	
XD-A support item that is not stocked. When required, item will be procured through normal supply channels.	

NOTE

Cannibalization or salvage may be used as a source of supply for any items source coded above except those coded XA and aircraft support items as restricted by AR 700-42.

(2) *Maintenance code.* Maintenance codes are assigned to indicate the levels of maintenance authorized to USE and REPAIR support items. The maintenance codes are entered in the third and fourth positions of the Uniform SMR Code format as follows:

(a) The maintenance code entered in the third position will indicate the lowest maintenance level authorized to remove, replace, and use the support item. The maintenance code entered in the third position will indicate one of the following levels of maintenance:

<i>Code</i>	<i>Application/Explanation</i>
O-Support item is removed, replaced, used at the organizational level,	

(b) The maintenance code entered in the fourth position indicates whether the item is to be repaired, and identifies the lowest maintenance level with the capability to perform complete repair (i.e., all authorized maintenance functions). This position will contain one of the following maintenance codes:

<i>Code</i>	<i>Application/Explanation</i>
O-The lowest maintenance level capable of complete repair of the support item is the organizational level.	
F-The lowest maintenance level capable of complete repair of the support item is the direct support level.	
H-The lowest maintenance level capable of complete repair of the support item is the general support level.	
D-The lowest maintenance level capable of complete repair of the support item is the depot level.	
Z-Nonreparable. No repair is authorized.	

(3) *Recoverability code.* Recoverability codes are assigned to support items to indicate the disposition action on unserviceable items. The recoverability code is entered in the fifth position of the Uniform SMR Code format as follows

<i>Recoverability codes</i>	<i>Definition</i>
Z- Nonreparable item. When unserviceable, condemn and dispose at the level indicated in position 3.	
O- Repairable item. When uneconomically repairable,	

condemn and dispose at organizational level.
 F-Reparable item. When uneconomically reparable, condemn and dispose at the direct support level.
 H-Reparable item. When uneconomically reparable, condemn and dispose at the general support level.
 D-Reparable item. When beyond lower level repair capability, return to depot. Condemnation and disposal not authorized below depot level.

c. National Stock Number. Indicates the National stock number assigned to the item and will be used for requisitioning purposes,

d. Part Number. Indicates the primary number used by the manufacturer (individual, company, firm, corporation, or Government activity), which controls the design and characteristics of the item by means of its engineering drawings, specifications, standards, and inspection requirements to identify an item an range of items.

NOTE

When a stock numbered item is requisitioned, the repair part received may have a different part number than the one part being replaced.

e. Federal Supply Code for Manufacturer (FSCM). The FSCM is a 5-digit numeric code listed in SB 708-42 which is used to identify the manufacturer, distributor, or Government agency, etc.

f. Description. Indicates the Federal item name and, if required, a minimum description to identify the item.

g. Unit of Measure (U/M). Indicates the standard of the basic quantity of the listed item as used in performing the actual maintenance function. This measure is expressed by a two-character alphabetical abbreviation (e.g., ea, in, pr, etc), When the unit of measure differs from the unit of issue, the lowest unit of issue that will satisfy the required units of measure will be requisitioned.

h. entity Incorporated in Unit. Indicates the quantity of the item used in the breakout shown on the illustration figure, which is prepared for a functional group, subfunctional group, or an assembly.

4. Special Information.

a. Usable on codes are shown in the description column. Uncoded items are applicable to all models. Identification of the usable on codes used in this publication are:

<i>Code</i>	<i>Used on</i>
2H5	AN/GMD-1A
2JH	AN/GMD-1B

b. The following publications pertain to the AN/GMD-1A, AN/GMD-1B and their components:

TM 11-6625-213-12, Test Sets TS-538/U, TS-538A/U, TS-538B/U and TS-538C/U

TM 11-6625-213-20P, Test Sets TS-538/U, TS-538A/U, TS-538B/U and TS-538C/U

TM 11-6660-206-12, Rawin Sets AN/GMD-1A and AN/GMD-1B

c. The illustrations in this manual are identical to those published in TM 11-6660-206-34P. Only those parts assigned the third position SMR maintenance-code "C" or "O" are listed in the tabular listing there fore, there may be a break in the item number sequence. Only illustrations containing organizational. authorized items appear in this manual.

5. How to Locate Repair Parts

a. When National stock number or part number is unknown.

(1) *First.* Using the table of contents, determine the functional group within which the item belongs. This is necessary since illustrations are prepared for functional groups and listings are divided into the same groups.

(2) *Second.* Find the illustration covering the functional group to which the item belongs.

(3) *Third.* Identify the item on the illustration and note the illustration figure and item number of the item.

(4) *Fourth.* Using the Repair Parts Listing, find the figure and item number noted on the illustration.

b. When National stock number or part number is known.

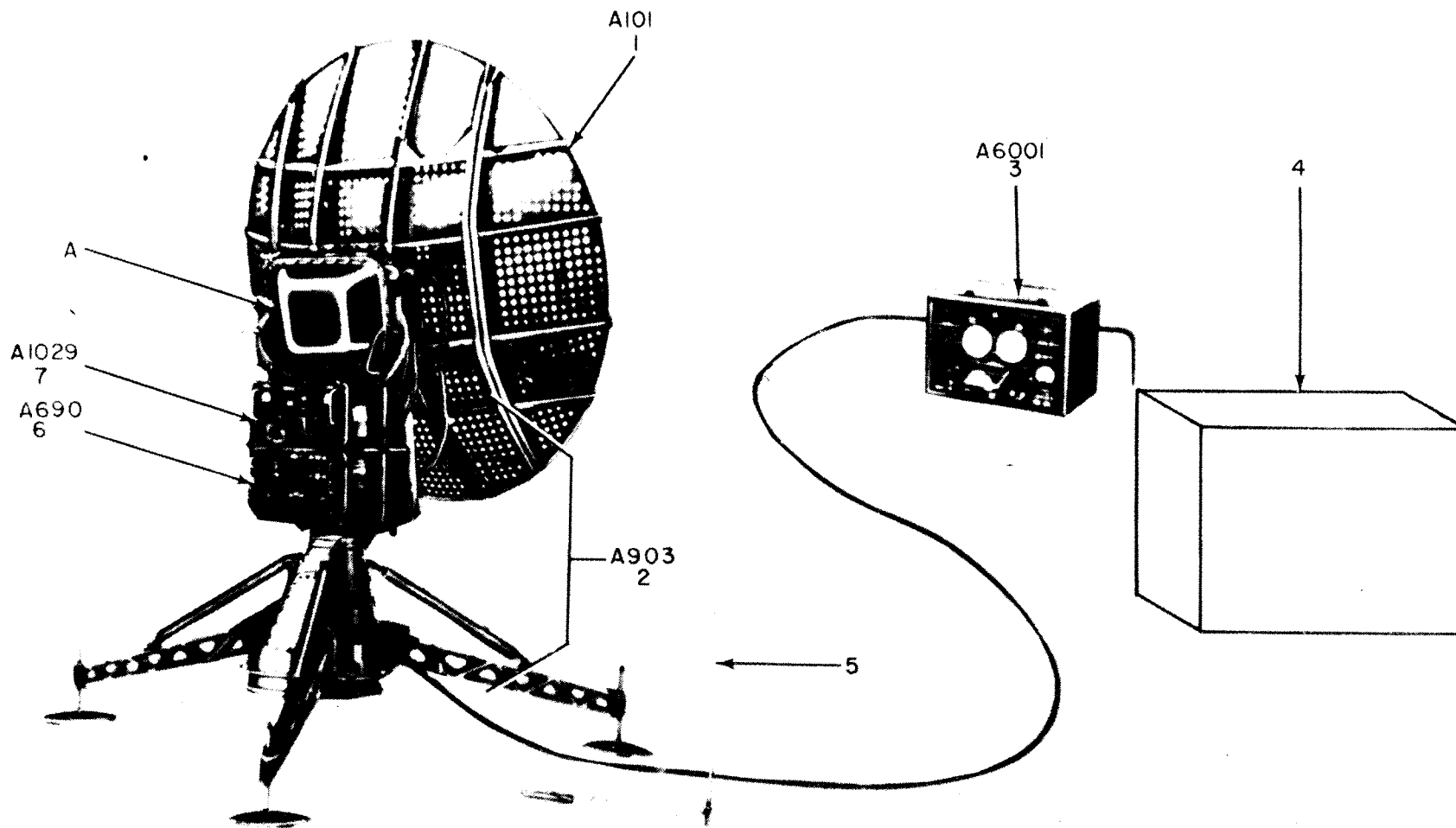
(1) *First.* Using the Index of National Stock Numbers and Part Numbers, find the pertinent National stock number or part number. This index is in NIIN sequence followed by a list of part numbers in alphaneric sequence, cross-referenced to the illustration figure number and item number.

(2) *Second.* After finding the figure and item number, locate the figure and item number in the repair parts list.

6. Abbreviations.

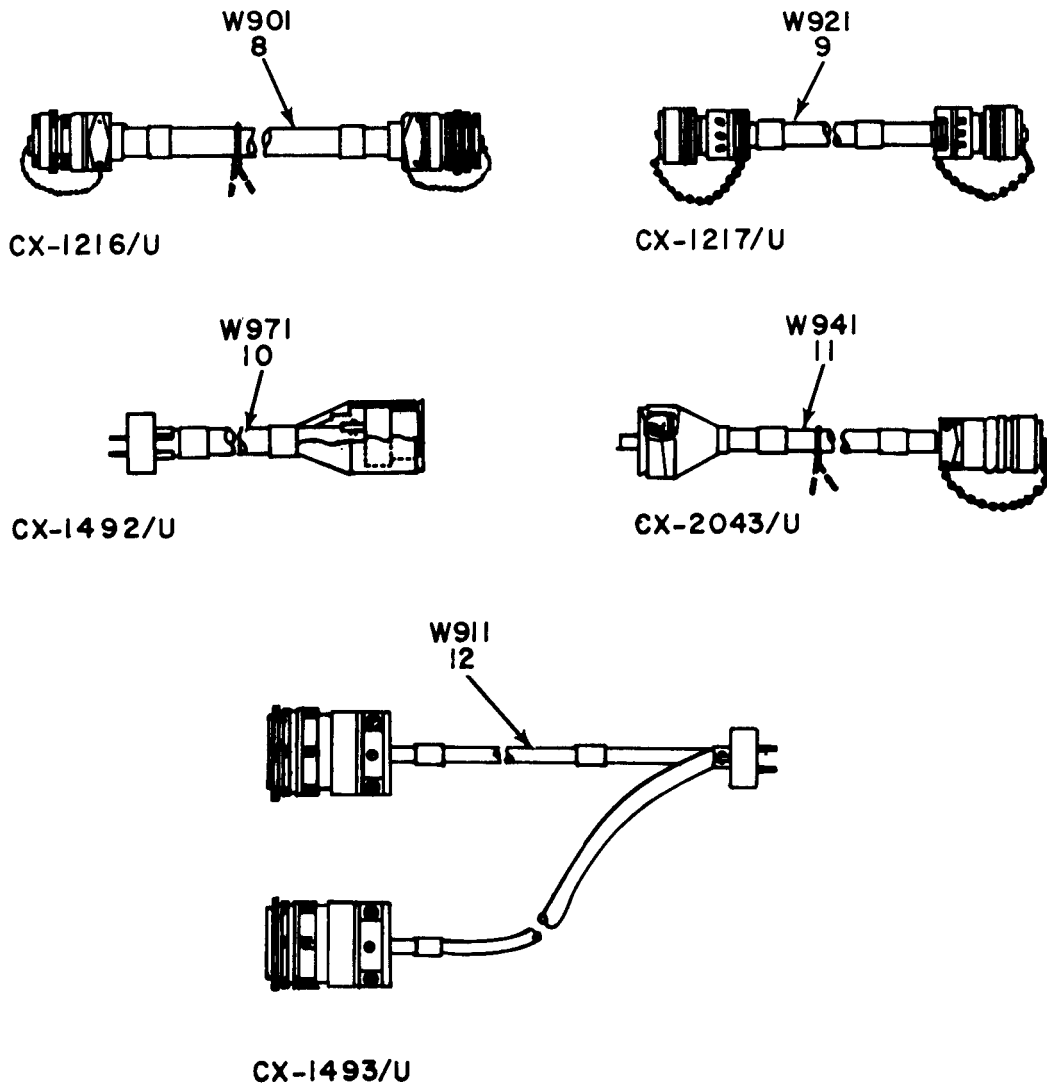
Not applicable.

(Next printed page is 4.1)



EL5CP001

Figure 1. Rawin Sets AN/GMD-1() (Sheet 1 of 4).



EL5CP002

Figure 1. Rawin Sets AN/GMD-1() (Sheet 2 of 4).

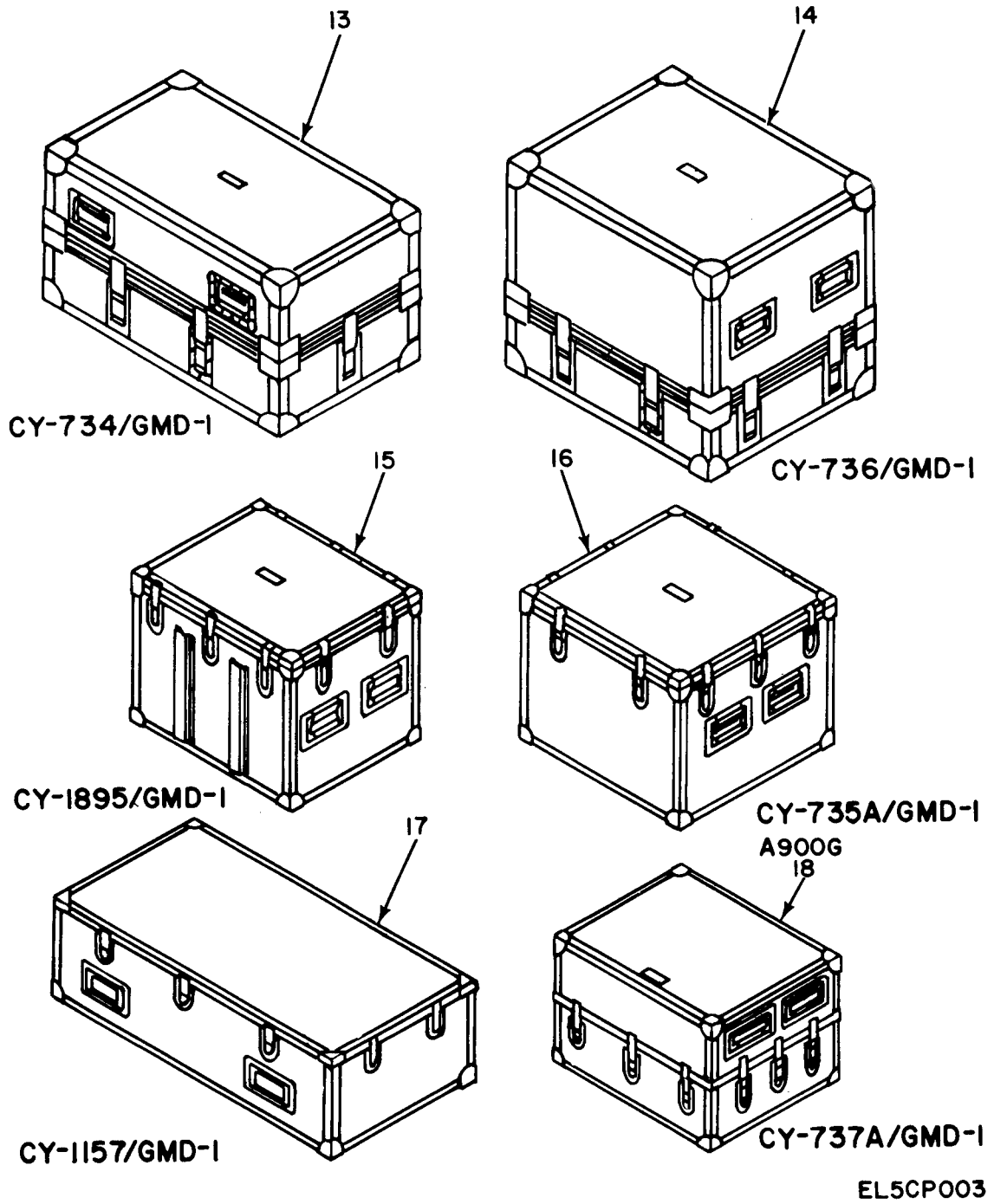
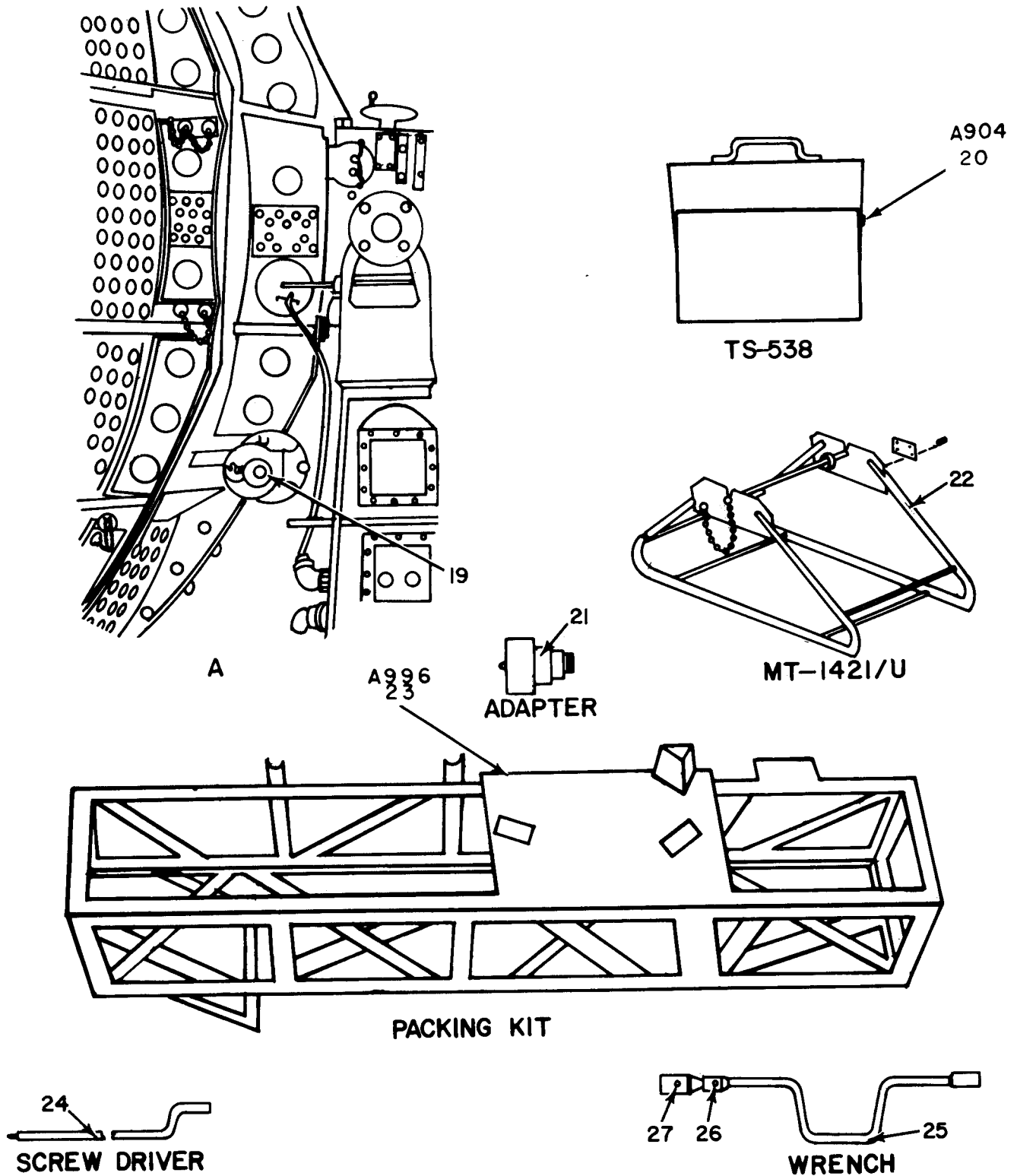


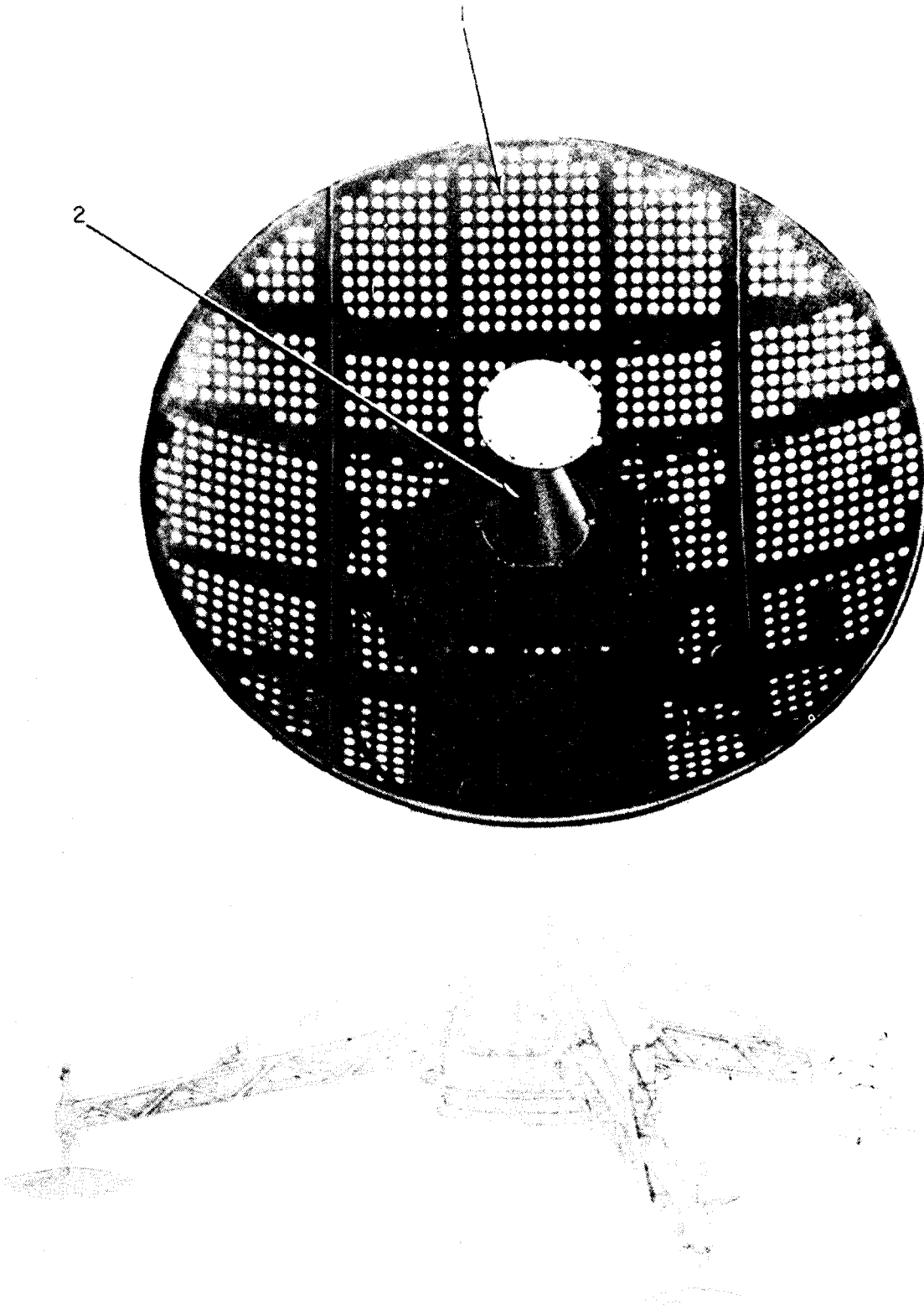
Figure 1. Rawin Sets AN/GMD-1() (Sheet 3 of 4).



EL5CP004

Figure 1. Rawin Sets AN/GMD-1() (Sheet 4 of 4).

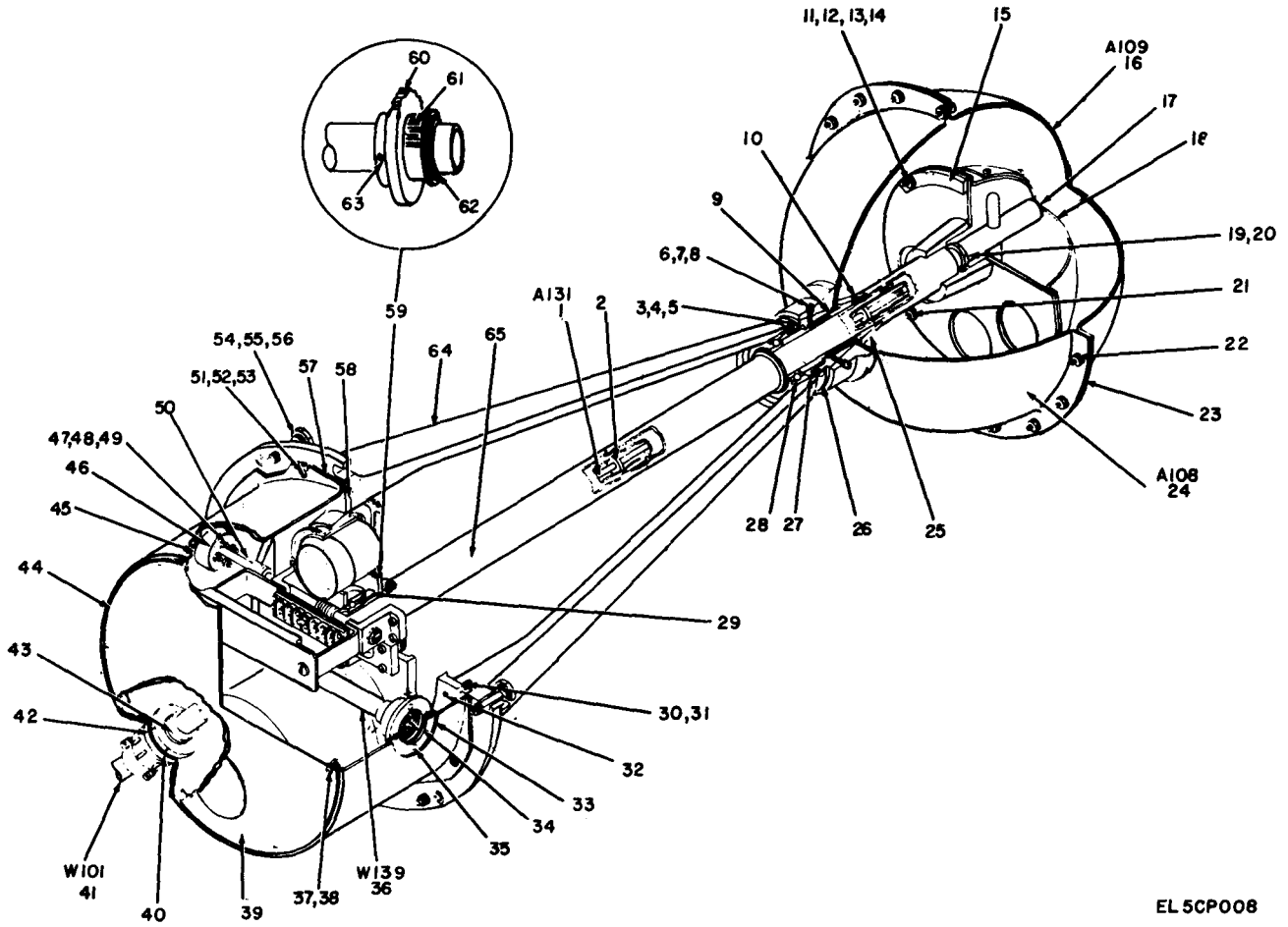
SECTION II (1) ILLUSTRATION		(2)	(3)	(4)	(5)	TM11-6660-206-20P (6)	(7)	(8)
(A) FIG NO	(B) ITEM NO	SMR CODE	NATIONAL STOCK NUMBER	PART NUMBER	FSCM	DESCRIPTION	USABLE ON CODE	U/M INC IN UNIT
						GROUP OO RAWIN SETS AN/GMD-1()		
1	1	XDOHH		SMC198195	80063	ANTENNA	AJH	EA 1
1	1	XDOHH		AS462CGMD1	80058	ANTENNA	AJH	EA 1
1	1	XDOHH		AS462BGMD-1	80058	ANTENNA	2H5	EA 1
1	1	XDOHH		AS46AGMD-1	80058	ANTENNA	2H5	EA 1
1	2	PAODD	6660-00-752-5801	AB159EGMD1	80058	PEDESTAL USED ON CONTRACT NUMBER E-190-69(N)	AJH	EA 1
1	2	XDODD		AB-159D/GMD-1	80058	PEDESTAL USED ON CONTRACT NUMBERS 15903-P55,15590-P55 AND 29114-PP-58-134	AJH	EA 1
1	2	PAODD	6660-00-256-8328	AB159C/GMD-1	80058	PEDESTAL,ANTENNA OR		EA 1
1	2	XDODD		AB-159B/GMD-1	80058	PEDESTAL		EA 1
1	3	PAOFF	6660-00-268-0186	SMD584973	80063	CONTROL,RECORDER USED ON CONTRACT NUMBER E-190-69(N)	AJH	EA 1
1	3	XDOFF		C-577D/GMD-1	80058	CONTROL,RECORDER USED ON CONTRACT NUMBERS 15903-P55,15590-P55 AND 29144-PP-58-134	AJH	EA 1
1	3	XDOFF		C577B/GMD-1	80058	CONTROL-RECORDER	2H5	EA 1
1	5	PAOOO	6660-00-274-6521	SCC93153	80063	ROD AND CABLE ASSEM		EA 1
1	6	PAODD	6660-00-775-3604	SMD282251	80063	CONTROL,ANTENNA USED ON CONTRACT NUMBER E-190-69(N)	AJH	EA 1
1	7	XDOHH		SMD282253	80063	RAWIN,RECEIVER USED ON CONTRACT NUMBER E-190-69(N)		EA 1
1	7	XDOHH		R-301B/GMD-1	80058	RAWIN,RECEIVER USED ON CONTRACT NUMBERS 15903-P55,15590-P55 AND 29114-PP-58-134	AJH	EA 1
1	7	XDOHH		R-301/GMD-1	80058	RAWIN,RECEIVER OR	2H5	EA 1
1	7	XDOHH		R-301C/GMD-1	80058	RAWIN,RECEIVER OR	2H5	EA 1
1	7	XDOHH		R-301B/GMD-1	80058	RAWIN,RECEIVER	2H5	EA 1
1	8	PAOFF	6660-00-191-9773	CX1216U	80058	CABLE ASSY		EA 1
1	9	PAOFF	5995-00-091-1465	SCD93575	80063	CABLE ASSEMBLY,SPEC		EA 1
1	10	PAOFF	6660-00-170-8777	SCD93543	80063	CABLE ASSY,PWR,ELEC		EA 1
1	11	PAOFF	6660-00-884-7577	SCD93643	80063	CABLE ASSY,RECORDER		EA 1
1	12	XDOFF		SCD93578	80063	CABLE ASSEMBLY,PWR		EA 1
1	13	XDODD		SMD391000	80063	CASE ASSY		EA 1
1	14	XDODD		SMD391043	80063	CASE ASSEMBLY		EA 1
1	15	XDODD		SMD391145	80063	CASE ASSEMBLY	AJH	EA 1
1	16	XDODD		SMD391018	80063	CASE ASSEMBLY		EA 1
1	17	XDODD		SMD391083	80063	CAS		EA 1
1	18	XDODD		SMD391060	80063	CASE ASSEMBLY		EA 1
1	19	PAODD	6650-00-568-9987	SMC282647	80063	TELESCOPE,ELBOW		EA 1
1	20	XDODD		TS538()U	80058	TEST SET,RADIO		EA 1
1	22	XDOFF		SCD87937	80063	HOLDER,CABLE REEL		EA 1
1	23	XDOFF		SCD282552	80063	PACKING KIT		EA 1
1	24	PAOZZ	5120-00-596-8653	SCB93534	80063	SCREWDRIIVER,FLAT TI		EA 1
1	25	PAOZZ	5120-00-284-1388	SCD93535	80063	WRENCH,SPECIAL		EA 1



EL5CP005

Figure 2. Antenna AS-462()/GMD-1

SECTION II		TM11-6660-206-20P					
(1)	(2)	(3)	(4)	(5)	(6)	(7)	(8)
ILLUSTRATION							
(A)	(B)	NATIONAL			DESCRIPTION		QTY
FIG	ITEM	SMR	STOCK	PART			INC
NO	NO	CODE	NUMBER	NUMBER	FSCM	USABLE ON CODE	U/M
							UNIT
					GROUP 01 ANTENNA AS-462()/GMD-1		
2	1	PAOFF	6660-00-240-3858	SMD282564	80063 REFLECTOR, ANTENNA		EA 1
2	2	PAOFF	6660-00-681-9749	SMD282255	80063 ANTENNA, SUBASSEMBLY		EA 1



EL5CP008

Figure 3. Spinner Cup and Radome Assembly.

SECTION II		TM11-6660-206-20P					
(1)	(2)	(3)	(4)	(5)	(6)	(7)	(8)
ILLUSTRATION							
(A)	(B)	NATIONAL			DESCRIPTION		QTY
FIG	ITEM	STOCK	PART	FSCM		USABLE ON CODE	INC
NO	NO	NUMBER	NUMBER				IN
							UNIT
					GROUP 0102 SPINNER CUP AND RADOME ASSEMBLY		
3	33	XDOZZ		SMB192357	80063 CAP, PROTECTIVE DUST		EA 1
3	35	PAOZZ	5305-00-054-6652	MS51957-28	96906 SCREW, MACHINE		EA 4
3	39	XDOZZ		SMD282567	80063 COVER ASSEMBLY		EA 1
3	44	PAOZZ	5330-00-298-7303	SCC93895	80063 GASKET		EA 1

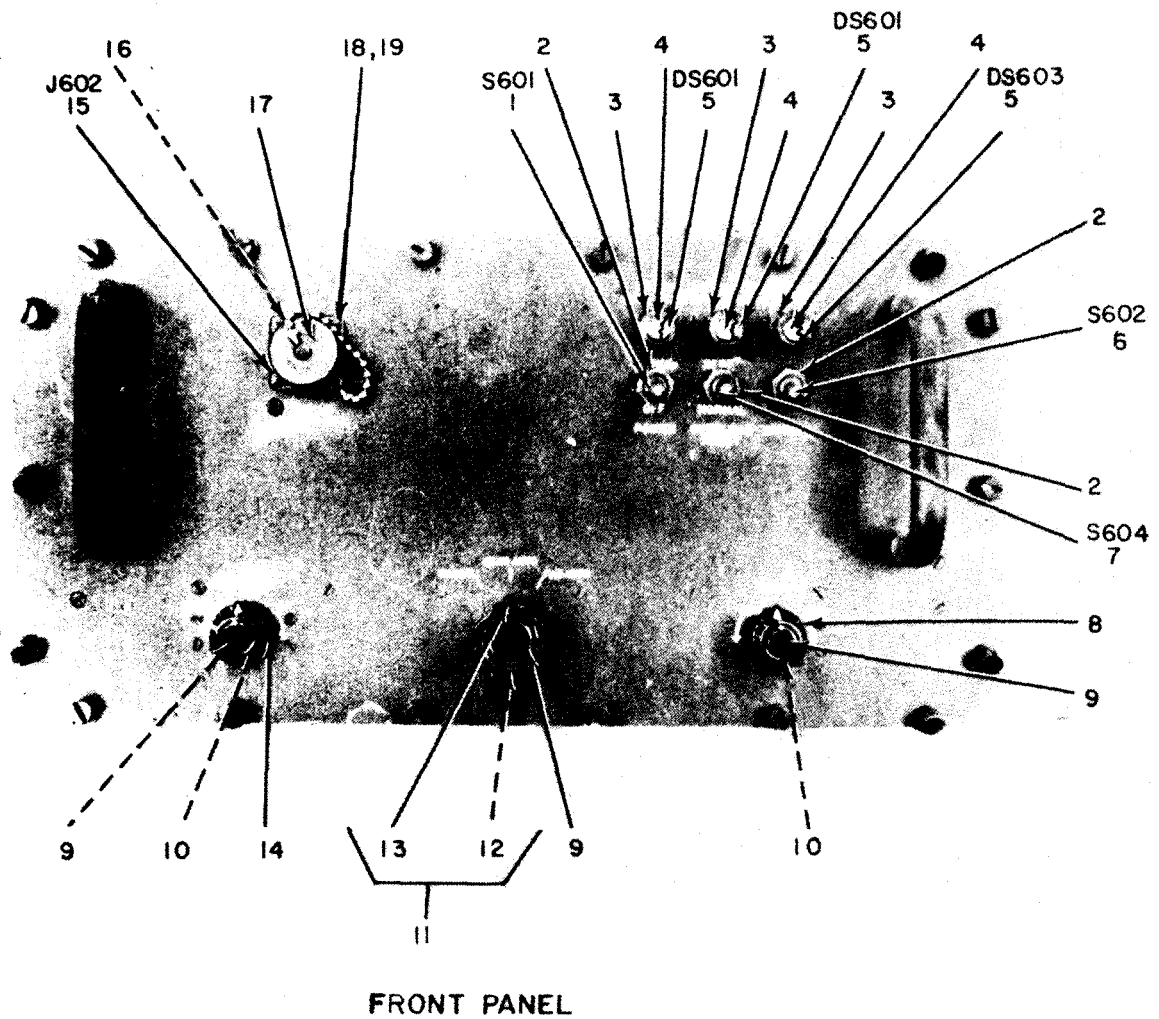
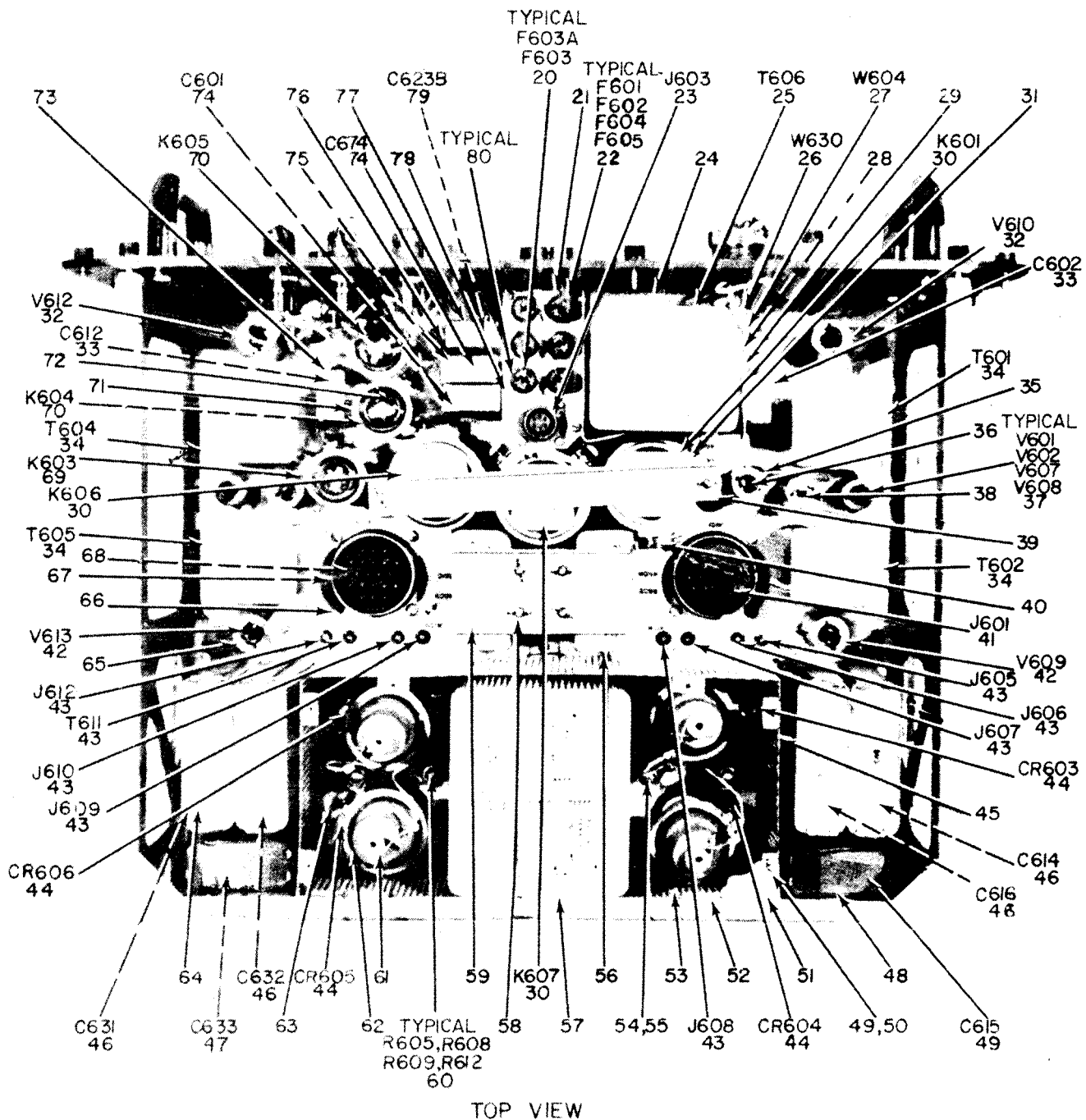


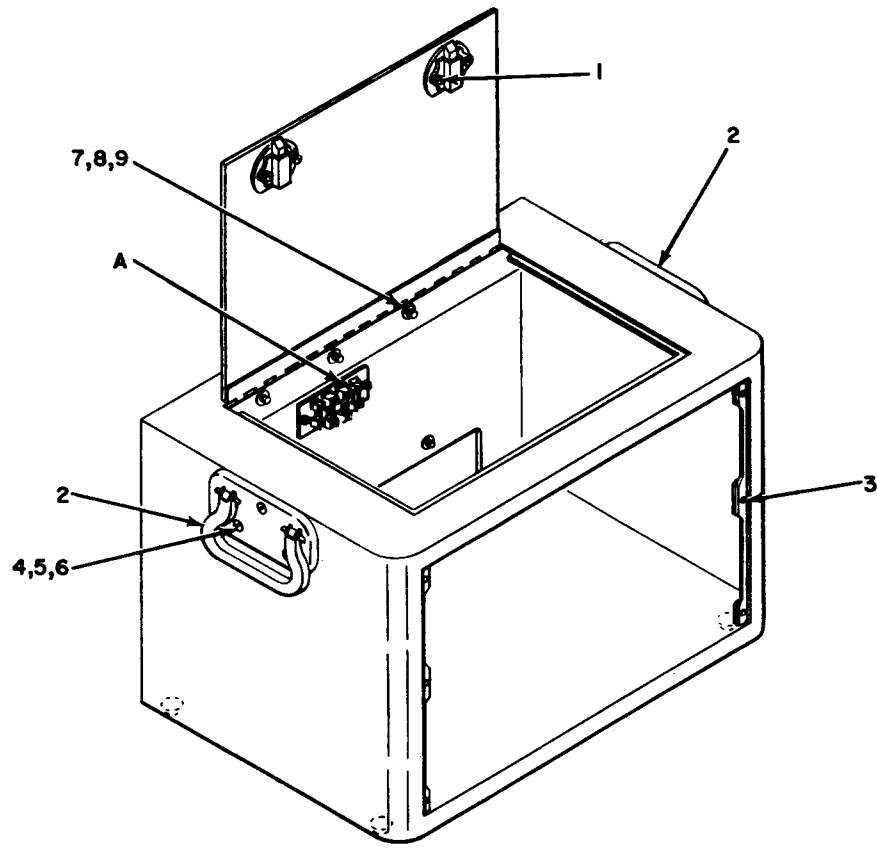
Figure 4. Antenna Control C-578()/GMD-1 (Sheet 1 of 2).



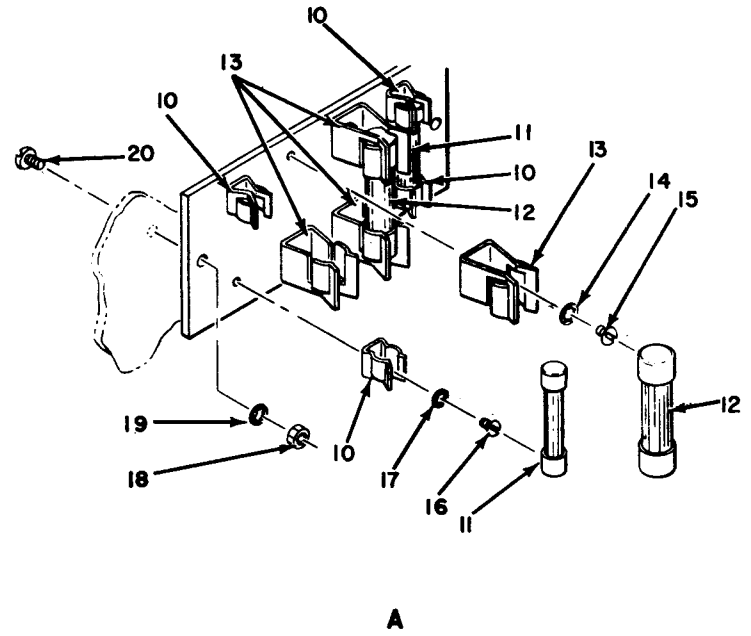
EL5CP016

Figure 4. Antenna Control C-578()/GMD-1 (Sheet 2 of 2)

SECTION II		TM11-6660-206-20P					
(1)	(2)	(3)	(4)	(5)	(6)	(7)	(8)
ILLUSTRATION							
(A)	(B)	NATIONAL			DESCRIPTION		QTY
FIG	ITEM	STOCK	PART	FSCM		USABLE ON CODE	INC
NO	NO	NUMBER	NUMBER			U/M	IN
							UNIT
					GROUP 13 ANTENNA CONTROL C-578()/GMD-1		
4	5	PAOZZ 6240-00-223-9100	NE51	08108	LAMP, GLOW	EA	3
4	20	PAOZZ 5920-00-284-6787	F02A250V5A	81349	FUSE, CARTRIDGE	EA	2
4	22	PAOZZ 5920-00-557-5033	F03A250V8A	81349	FUSE, CARTRIDGE	EA	4
4	44	XDODD	SMC584950	80063	SCR SWITCHING UNIT	EA	4



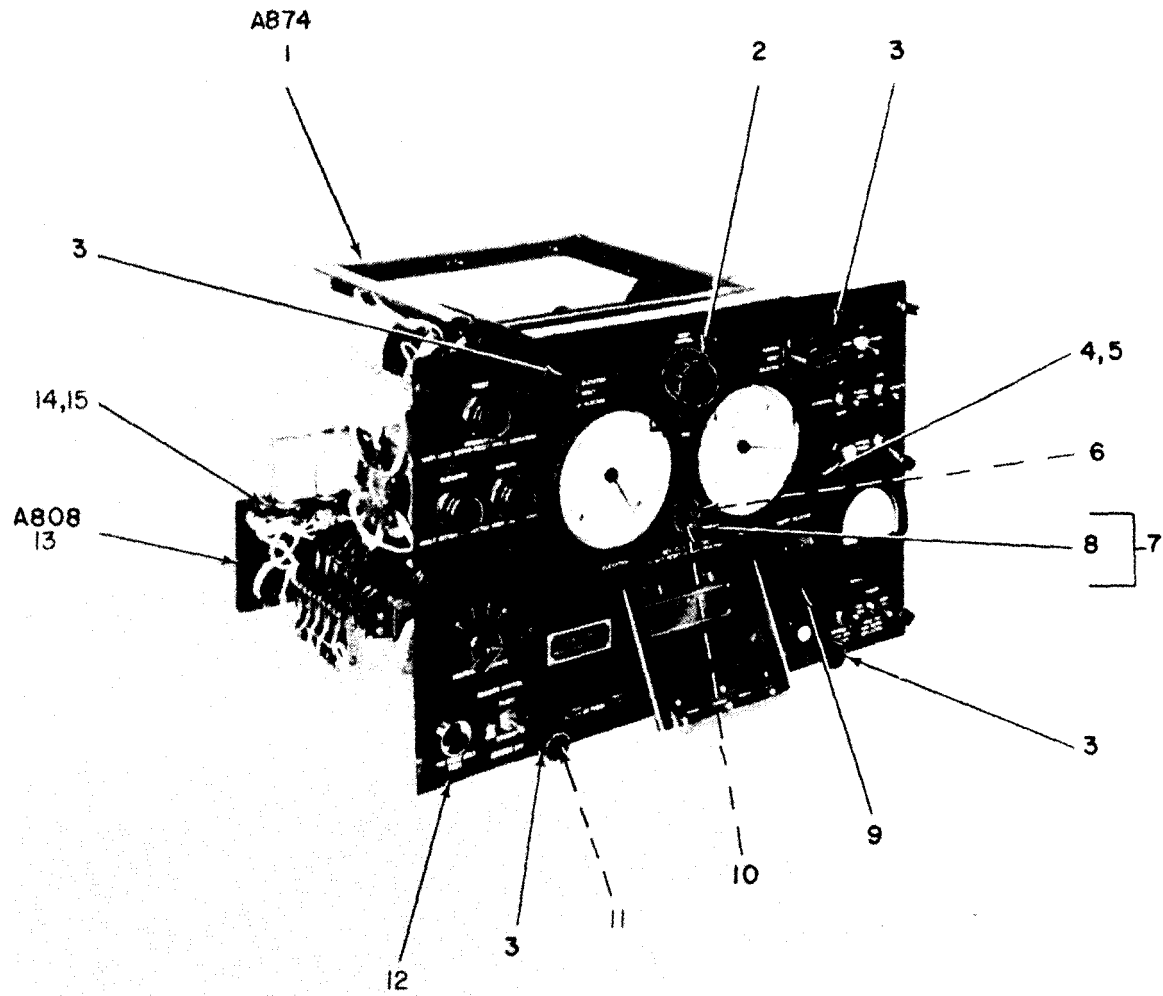
OUTSIDE VIEW



EL5CP027

Figure 5. Electrical Equipment Cabinet.

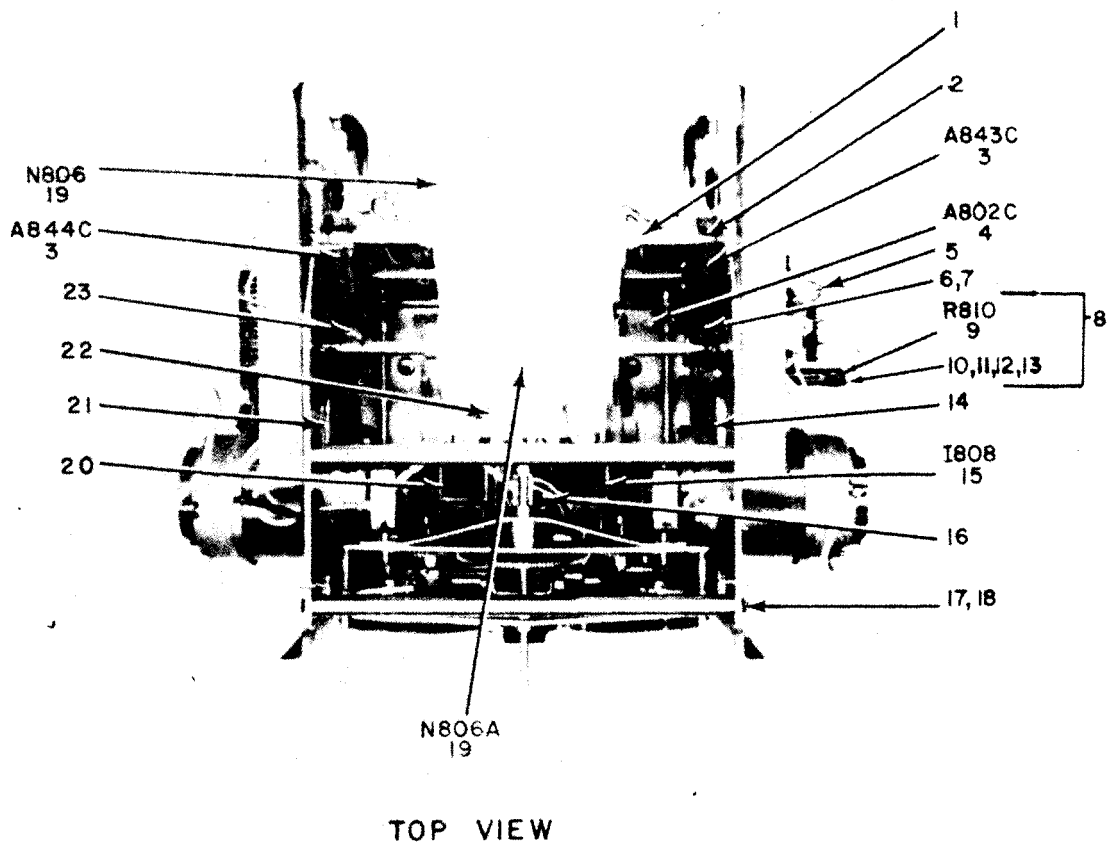
SECTION II		TM11-6660-206-20P						
(1)	(2)	(3)	(4)	(5)	(6)	(7)	(8)	
ILLUSTRATION								
(A)	(B)	NATIONAL			DESCRIPTION		QTY	
FIG	ITEM	STOCK	PART			USABLE ON CODE	INC	
NO	NO	NUMBER	NUMBER	FSCM		U/M	IN	
							UNIT	
					GROUP 1401 ELECTRICAL EQUIPMENT CABINET			
5	11	PAOZZ	5920-00-243-3787	F03A250V10A	81349	FUSE,CARTRIDGE	EA 2	
5	12	PAOZZ	5920-00-686-9514	F09A250V20A	81349	FUSE,CARTRIDGE USED ON CONTRACT NUMBER E-190-69(N)	EA 2	



EL5CP028

Figure 6. Control-Recorder Assembly.

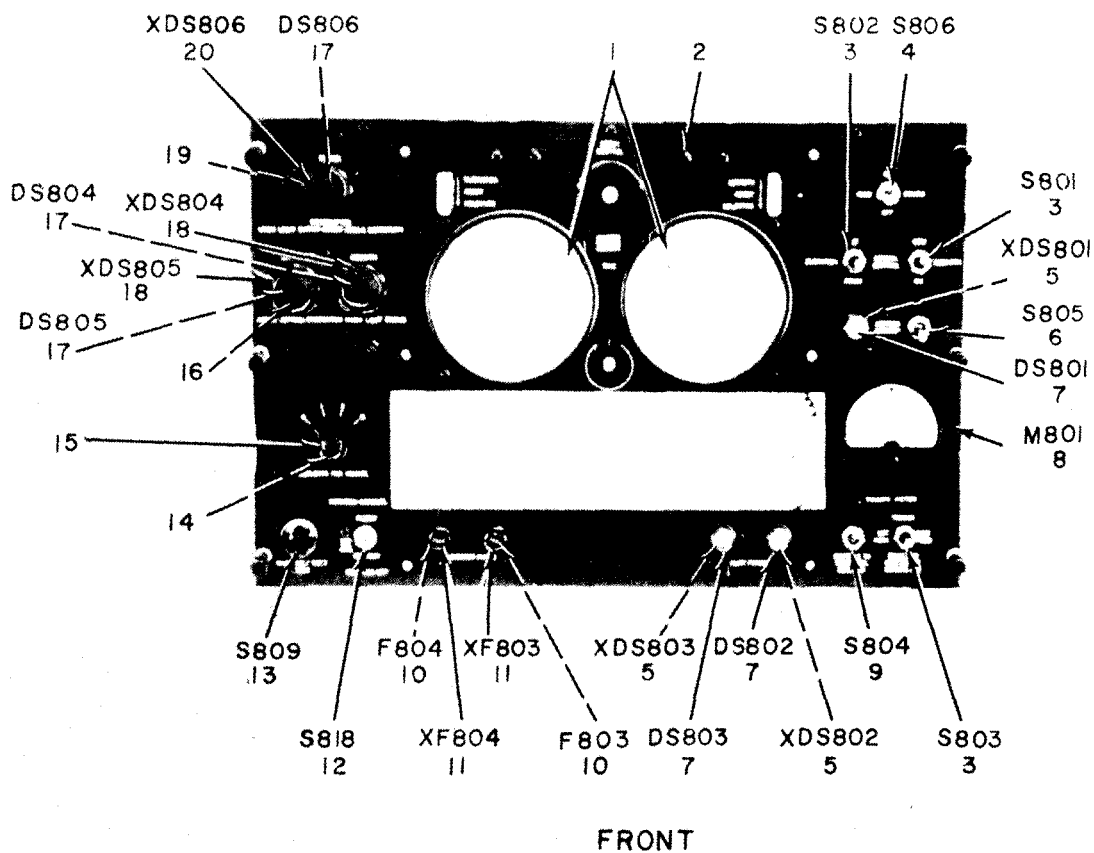
SECTION II						TM11-6660-206-20P		
(1)	(2)	(3)	(4)	(5)	(6)	(7)	(8)	
ILLUSTRATION								
(A)	(B)	NATIONAL			DESCRIPTION		QTY	
FIG	ITEM	STOCK	PART	FSCM		USABLE ON CODE	INC	
NO	NO	NUMBER	NUMBER				IN	
							UNIT	
GROUP 1402 CONTROL-RECORDER ASSEMBLY								
6	1	XDOHH		SMD584976	80063		EA	1
6	7	PAOOO	5355-00-579-2896	SMB282264	80063	AJH	EA	1
6	8	XDOZZ		MS25165-1	96906		EA	1
6	10	PAOZZ	5305-00-059-9251	AN565DC8H6	88044		EA	1
6	12	XDOFF		SMD282260	80063		EA	1
6	13	XDOFF		SMD282267	80063		EA	1



EL5CP030

Figure 7. Main Chassis Assembly.

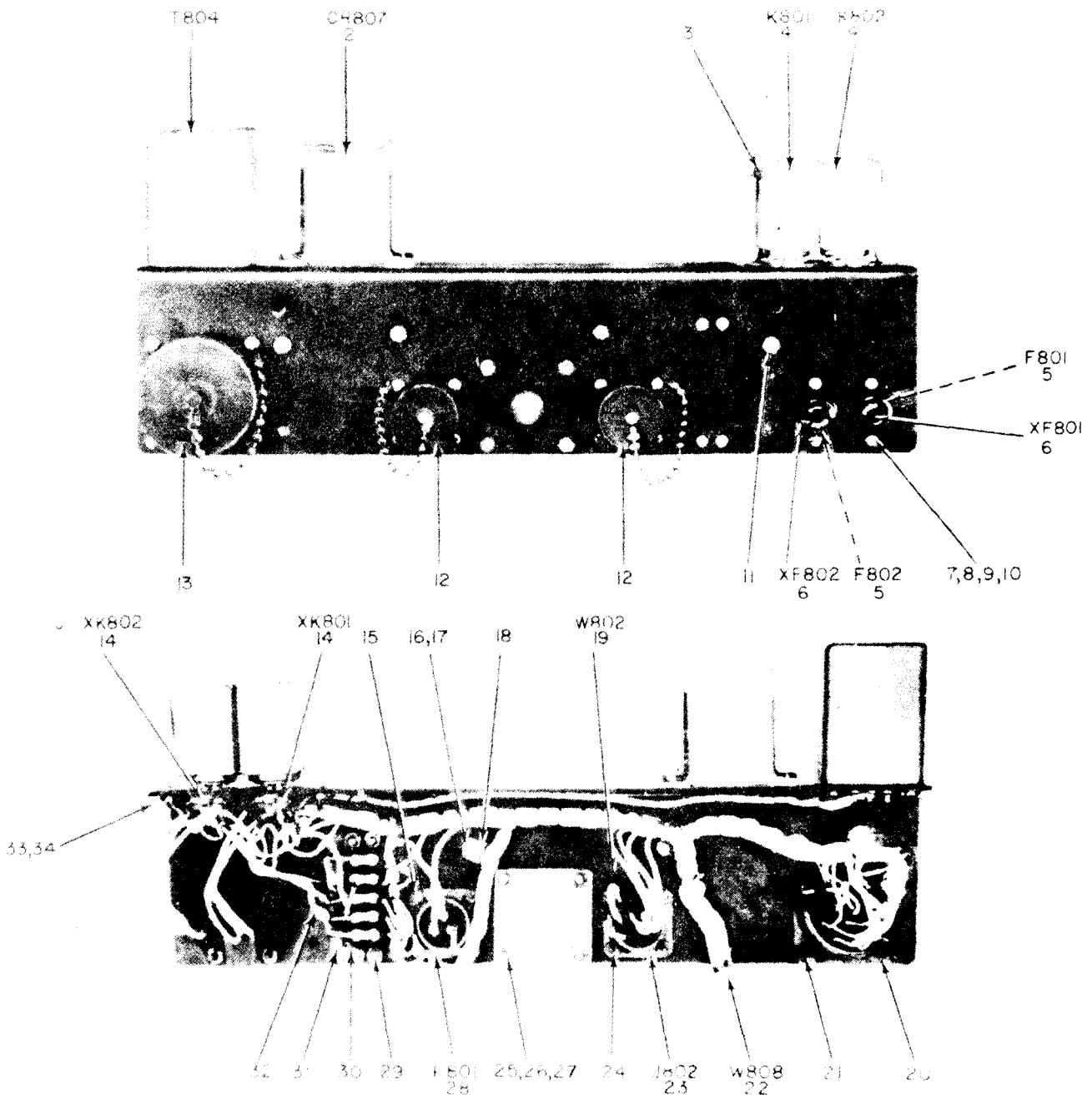
SECTION II		TM11-6660-206-20P					
(1)	(2)	(3)	(4)	(5)	(6)	(7)	(8)
ILLUSTRATION							
(A)	(B)	NATIONAL			DESCRIPTION		QTY
FIG	ITEM	STOCK	PART	FSCM		USABLE ON CODE	INC
NO	NO	NUMBER	NUMBER			U/M	IN
							UNIT
					GROUP 140202 MAIN CHASSIS ASSY		
7	19	PAOZZ	7530-00-001-4101	SMB282309	80063	TAPE,PULLER,COMPUTIN	EA 1



EL5CP05I

Figure 8. Panel Control Assembly.

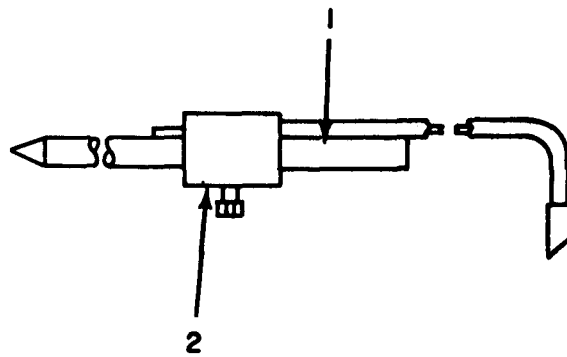
SECTION II		TM11-6660-206-20P						
(1)	(2)	(3)	(4)	(5)	(6)	(7)	(8)	
ILLUSTRATION					DESCRIPTION		QTY	
(A)	(B)	NATIONAL	PART	FSCM		USABLE ON CODE	IN	
FIG	ITEM	STOCK	NUMBER			U/M	UNIT	
NO	NO	CODE	NUMBER					
GROUP 140203 PANEL CONTROL ASSEMBLY								
8	1	PAOZZ	5355-00-301-4892	SCC98578	80063	WINDOW, DIAL	EA 2	
8	7	PAOZZ	6240-00-223-9100	NE51	08108	LAMP, GLOW	EA 3	
8	10	PAOZZ	5920-00-280-5002	F03A250V10A	81349	FUSE, CARTRIDGE	EA 2	
8	14	PAOZZ	5305-00-059-9251	AN565DC8H6	88044	SETSCREW	EA 1	
8	15	XDOZZ		MS25165-1	96906	KNOB	EA 1	
8	17	PAOZZ	6240-00-143-3049	MS15579-4	96906	LAMP, INCANDESCENT	EA 3	



ELN 7053

Figure 9. Chassis Assembly.

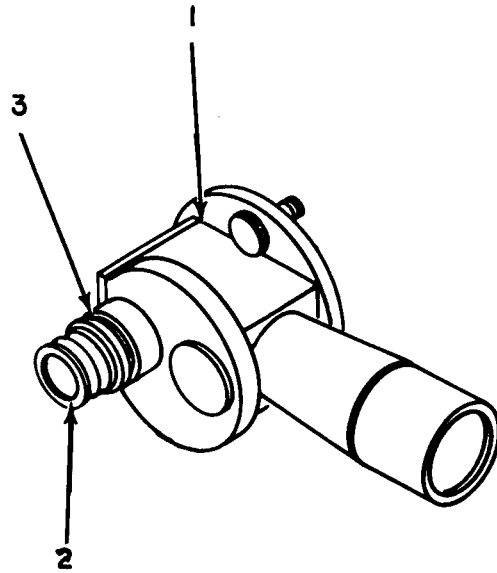
SECTION II		TM11-6660-206-20P					
(1)	(2)	(3)	(4)	(5)	(6)	(7)	(8)
ILLUSTRATION					DESCRIPTION		QTY
(A)	(B)	SMR	NATIONAL	PART			INC
FIG	ITEM	CODE	STOCK	NUMBER	FSCM	USABLE ON CODE	U/M
NO	NO		NUMBER				UNIT
					GROUP 140204 CHASSIS ASSEMBLY		
9	5	PAOZZ	5920-00-686-9514	F09A250V20A	23667 FUSE, CARTRIDGE		EA 2



EL5CP054

Figure 10. Ground Rod and Cable Assembly.

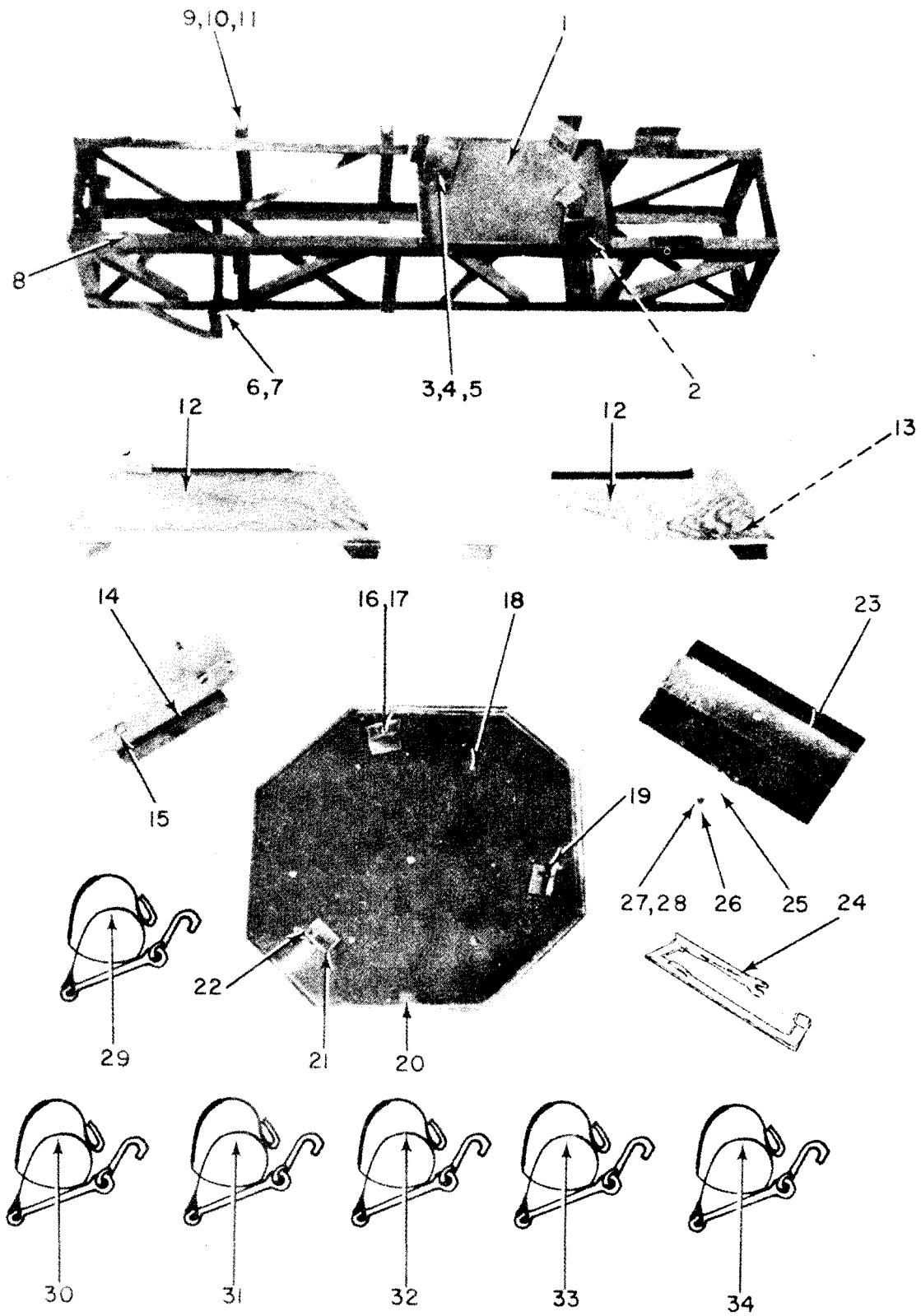
SECTION II		TM11-6660-206-20P					
(1)	(2)	(3)	(4)	(5)	(6)	(7)	(8)
ILLUSTRATION							
(A)	(B)	NATIONAL			DESCRIPTION		QTY
FIG	ITEM	STOCK	PART	FSCM		USABLE ON CODE	INC
NO	NO	CODE	NUMBER			U/M	IN
							UNIT
					GROUP 15 GROUND ROD AND CABLE ASSY		
10	1	PAOZZ	5975-00-240-3860	SCB176512	80063	ROD,GROUND	EA 1
10	2	PAOZZ	5999-00-186-3976	SCB176514	80063	CLAMP,ELECTRICAL	EA 1



EL5CP055

Figure 11. Telescope M-17 Modified.

SECTION II		TM11-6660-206-20P						
(1)	(2)	(3)	(4)	(5)	(6)	(7)	(8)	
ILLUSTRATION								
(A)	(B)	NATIONAL			DESCRIPTION		QTY	
FIG	ITEM	STOCK	PART	FSCM		USABLE ON CODE	INC	
NO	NO	CODE	NUMBER				IN	
							UNIT	
					GROUP 16 TELESCOPE M-17 MODIFIED			
11	1	PAODD	6650-00-400-4977	SMC282647-1	80063 TELESCOPE, ELBOW	EA	1	
11	2	PAOZZ	6650-00-150-1761	SMC584992	80063 EYE PIECE, OPTICAL IN	EA	1	
11	3	PAOZZ	6650-00-482-6155	SMD282648	80063 RETICLE, OPTICAL IN	EA	1	



EL5CP057

Figure 12. Packing Kit

SECTION II		TM11-6660-206-20P						
(1)	(2)	(3)	(4)	(5)	(6)	(7)	(8)	
ILLUSTRATION								
(A)	(B)	NATIONAL			DESCRIPTION		QTY	
FIG	ITEM	STOCK	PART	FSCM		USABLE ON CODE	INC	
NO	NO	NUMBER	NUMBER			U/M	IN	
							UNIT	
GROUP 19 PACKING KIT								
12	12	PAOZZ	6660-00-025-3908	SCB84307	80063	SUPPORT WOOD	EA 2	
12	13	PAOZZ	5305-00-290-2535	MS35494-282	96906	SCREW, WOOD	EA 16	
12	24	PAOZZ	5975-00-567-2332	SCD84305	80063	GUY	EA 1	
12	29	PAOZZ	5975-00-284-8299	SCD84302GR1	80063	GUY, CABLE	EA 1	
12	30	PAOZZ	5975-00-284-8302	SCD84302GR2	80063	GUY, CABLE	EA 1	
12	31	XDOZZ		SCD84302GR3	80063	GUY, CABLE	EA 1	
12	32	PAOZZ	5975-00-284-8301	SCD84302GR4	80063	GUY, CABLE	EA 1	
12	33	PAOZZ	5975-00-284-8304	SCD84303	80063	GUY	EA 1	
12	34	PAOZZ	5975-00-284-8303	SCD84304	80063	GUY	EA 1	

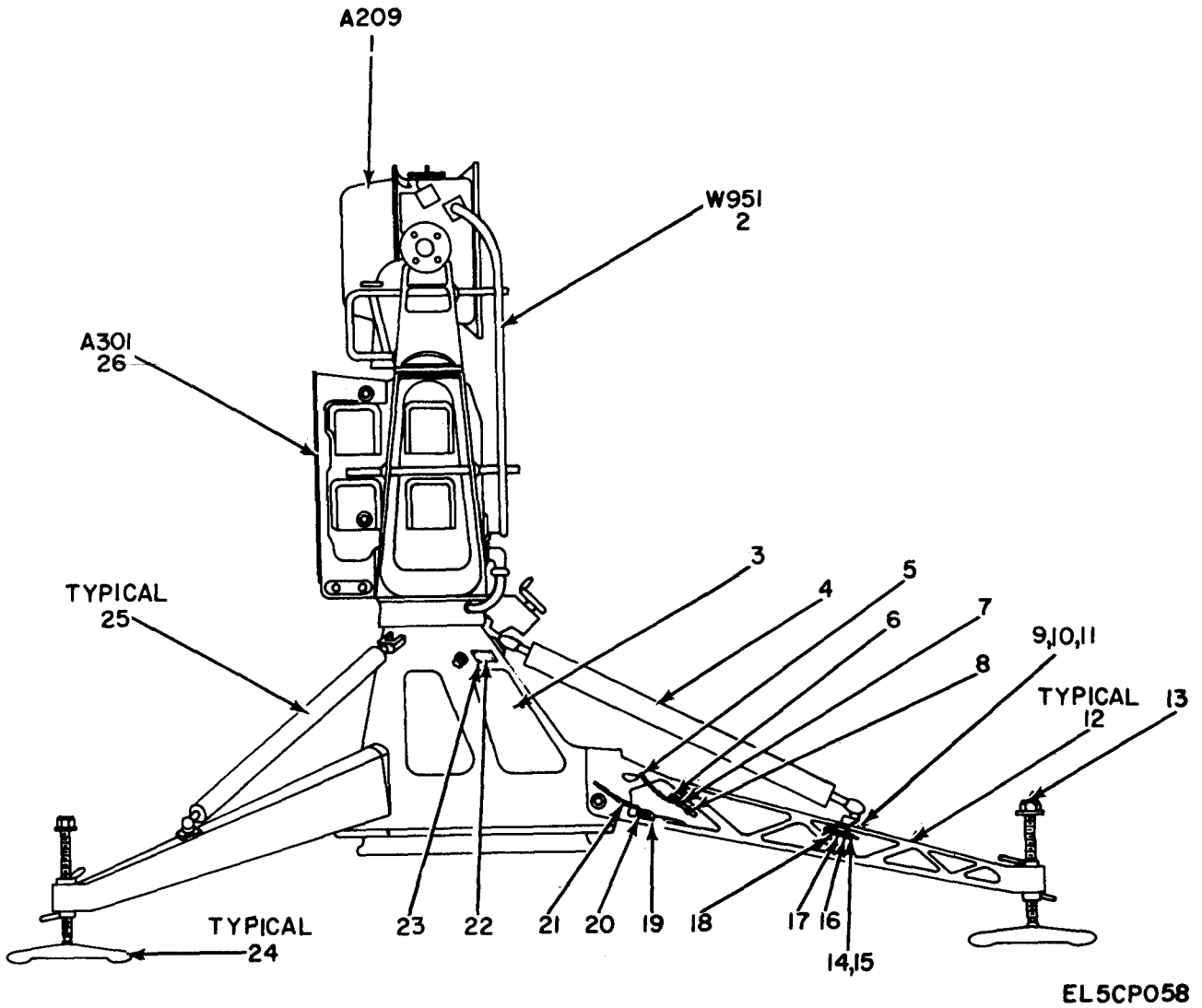
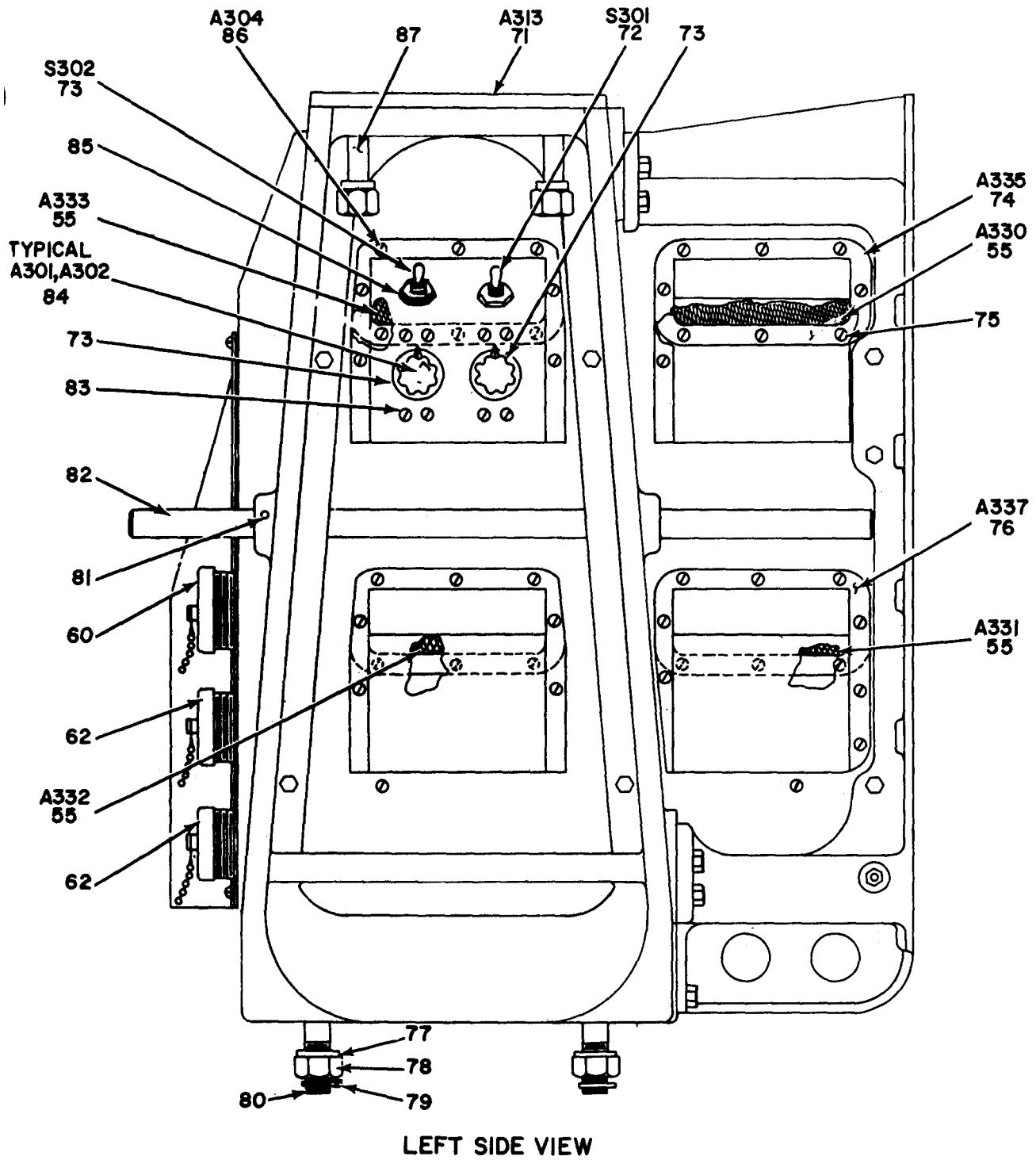


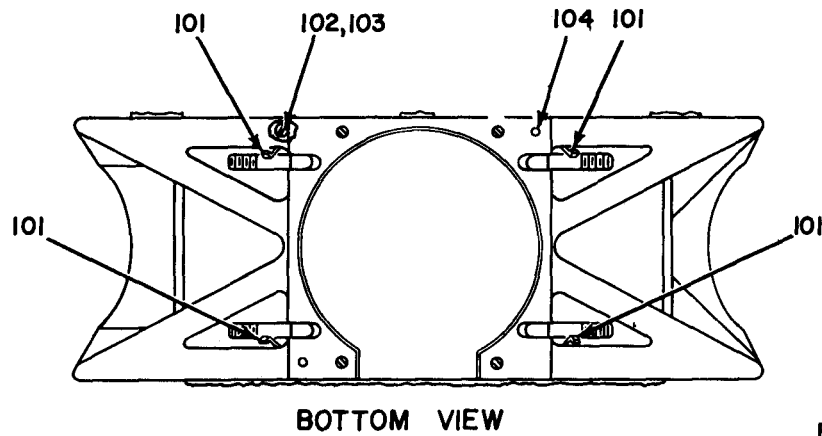
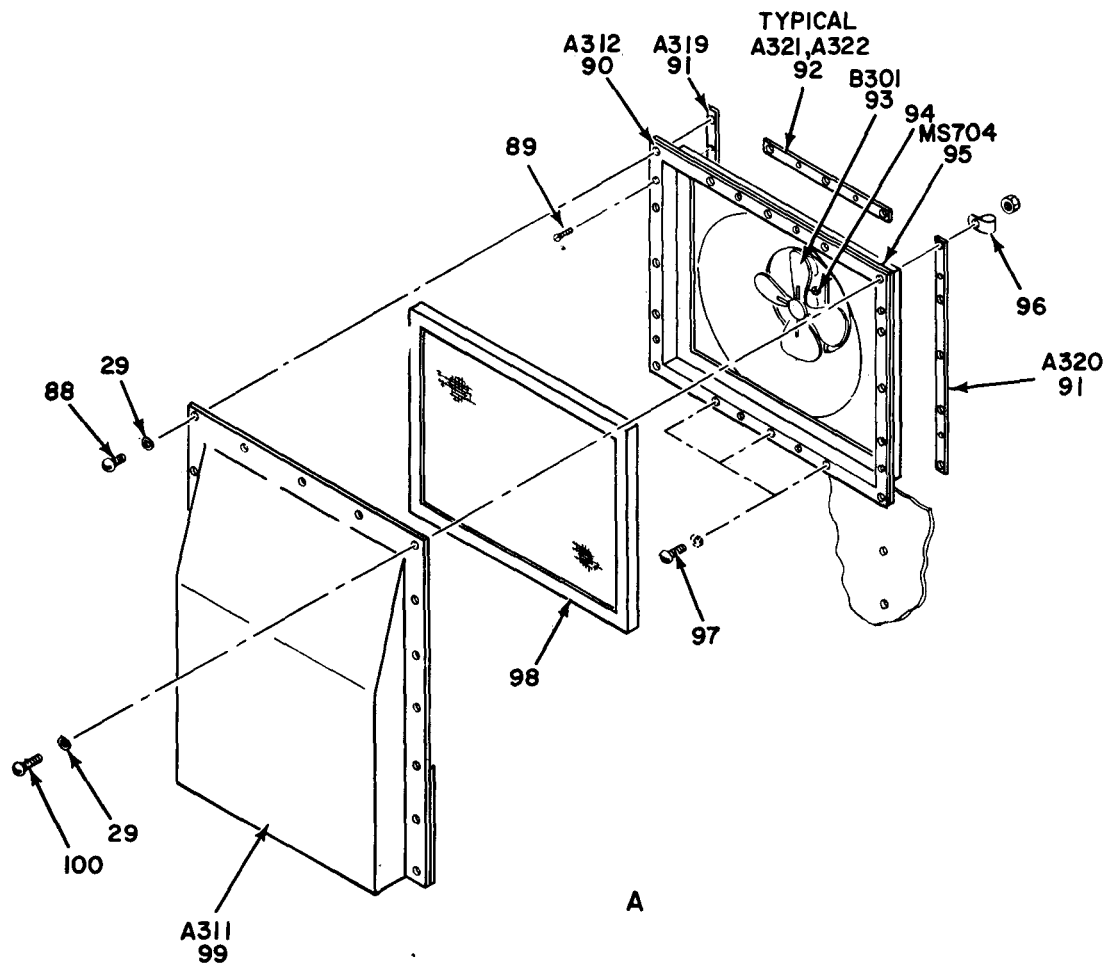
Figure 13. Pedestal AB-159()/GMD-1.

SECTION II (1) ILLUSTRATION		(2)	(3)	(4)	(5)	TM11-6660-206-20P (6)	(7)	(8)
(A) FIG NO	(B) ITEM NO	SMR CODE	NATIONAL STOCK NUMBER	PART NUMBER	FSCM	DESCRIPTION	USABLE ON CODE	U/M INC IN UNIT
						GROUP 20 PEDESTAL AB-159()/GMD-1		
13	1	PAOHH	6660-00-774-8411	SMD282589	80063	ELEVATION ASSEMBLY		EA 1
13	2	XDOFF		SCD93646	80063	CABLE AND CONDUIT A		EA 1
13	3	PAODD	6660-00-456-0832	SMD282640	80063	AZIMUTH ASSEMBLY		EA 1
13	4	PAOZZ	5340-00-138-0206	SCC93051GR2	80063	TURNBUCKLE ASSEMBLY		EA 1
13	6	PAOZZ	5306-00-140-2073	SCB98535	80063	SCREW,MACHINE USED ON CONTRACT NUMBER E-190-69(N)		EA 1
13	6	PAOZZ	5306-00-140-2073	SCB98535	80063	BOLT,MACHINE USED ON CONTRACT NUMBERS 15903-P55,15590-P55 AND 29114-PP-58-134	AJH	EA 3
13	9	PAOZZ	5305-00-082-6736	MS51959-114	96906	SCREW,MACHINE		EA 4
13	10	PAOZZ	5310-00-984-7042	MS35338-141	96906	WASHER,LOCK		EA 4
13	11	PAOZZ	5310-00-477-6768	MS35649-2384	96906	NUT,PLAIN,HEXAGON		EA 4
13	12	PAOZZ	6660-00-451-5379	SCD98529	80063	LEG,TRIPOD ASSEMBLY		EA 3
13	13	XDOZZ		SCC98532	80063	SCREW,ADJUSTING LEG		EA 1
13	14	PAOZZ	5305-00-050-9229	MS51957-63	96906	SCREW,MACHINE		EA 1
13	15	PAOZZ	5310-00-933-8120	MS35338-138	96906	WASHER,LOCK		EA 1
13	16	PAOZZ	5999-00-636-6520	SCB176342	80063	CLIP,ELECTRICAL		EA 3
13	17	PAOZZ	5306-00-407-9254	SCB93177	80063	BOLT,SHOULDER		EA 1
13	18	PAOZZ	5305-00-888-6132	SCB93176GR5	80063	SCREW CHAIN ASSY		EA 1
13	21	PAOZZ	5305-00-888-6133	SCB93176GR3	80063	SCREW CHAIN ASSY		EA 1
13	23	PAOZZ	5305-00-175-3230	MS21318-14	96906	SCREW,DRIVE		EA 4
13	24	PAOZZ	6660-00-404-2998	SCD93154	80063	PLATE,TRIPOD		EA 3
13	25	XDOZZ		SCC93051GR1	80063	TURNBUCKLE		EA 2
13	26	PAOFF	6660-00-705-5884	SMD198222	80063	HOUSING AND FRAME A		EA 1



EL5CP062

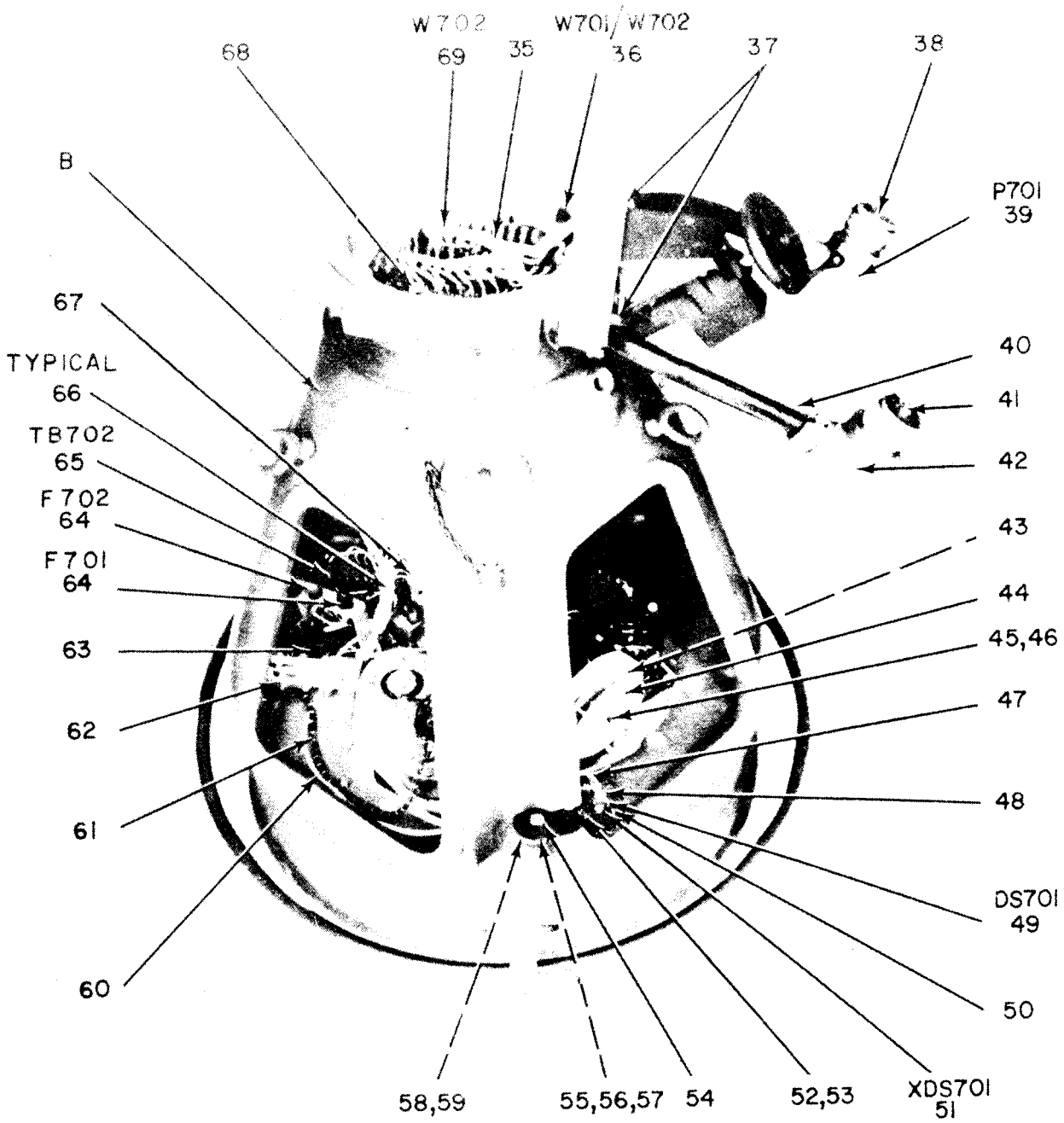
Figure 14. Housing and Frame Assembly (Sheet 1 of 2).



EL5CP063

Figure 14. Housing and Frame Assembly (Sheet 2 of 2).

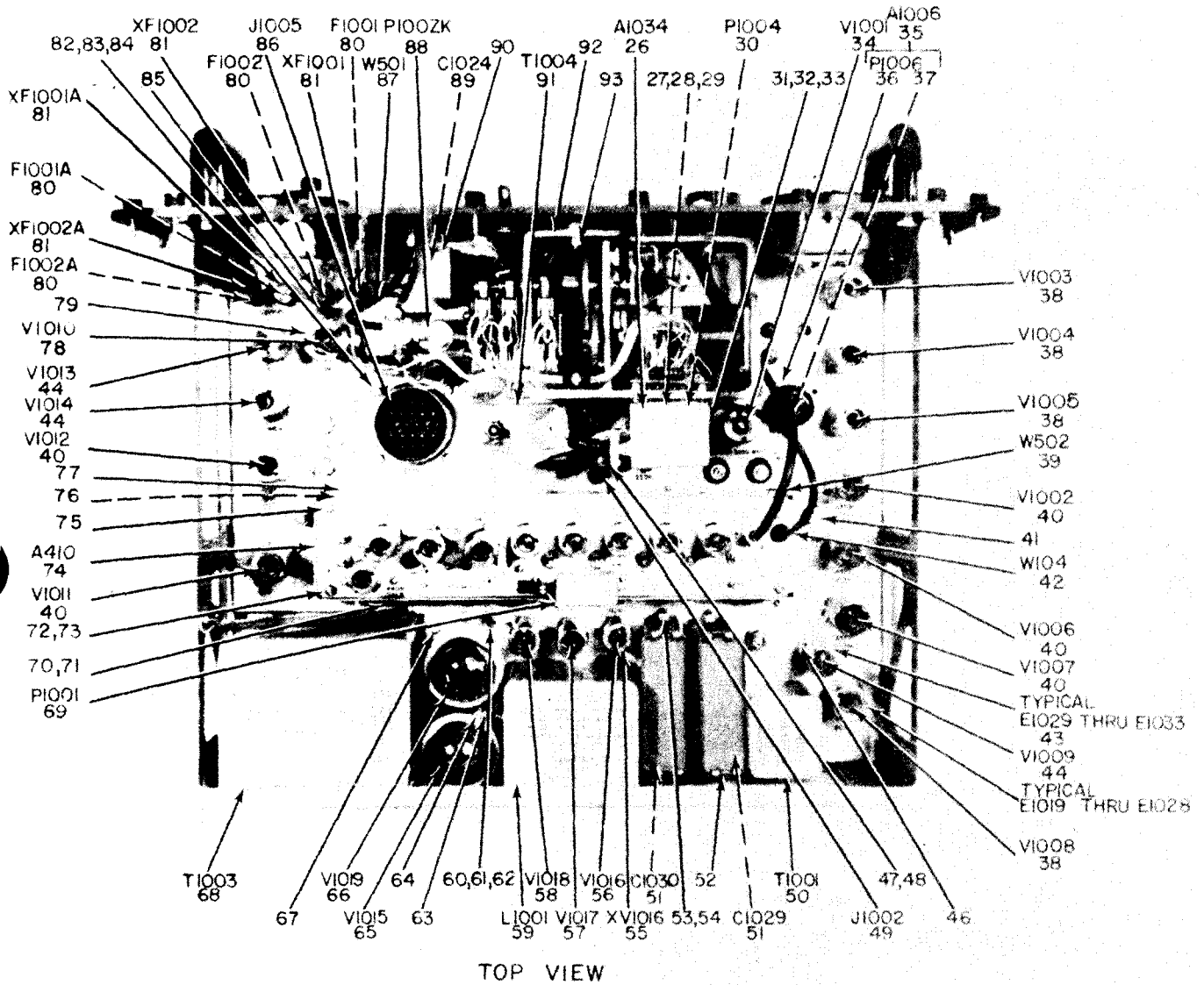
(1) ILLUSTRATION (A) FIG NO	(2) (B) ITEM NO	(3) SMR CODE	(3) NATIONAL STOCK NUMBER	(4) PART NUMBER	(5) FSCM	DESCRIPTION	(7) USABLE ON CODE	(8) QTY INC IN UNIT
						GROUP 2001 HOUSING AND FRAME ASSEMBLY		
14	85	PAOZZ	5930-00-689-6786	SMB109142	80063	BOOT, DUST AND MOIST	EA	2
14	98	PAOZZ	4130-00-006-1818	SCD93081	80063	ELEMENT, AIR CLEANER	EA	1



EL5CP081

Figure 15. Azimuth Assembly.

SECTION II		TM11-6660-206-20P						
(1)	(2)	(3)	(4)	(5)	(6)	(7)	(8)	
ILLUSTRATION								
(A)	(B)		NATIONAL		DESCRIPTION		QTY	
FIG	ITEM	SMR	STOCK	PART			INC	
NO	NO	CODE	NUMBER	NUMBER	FSCM	USABLE ON CODE	U/M	
							UNIT	
					GROUP 2003 AZIMUTH ASSEMBLY			
15	49	PAOZZ	6240-00-143-3050	MS15579-2	80063	LAMP	EA 1	
15	64	PAOZZ	5920-00-284-6787	F02A250V5A	81349	FUSE,CARTRIDGE	EA 2	



NOTE: FOR COMPLETE REFERENCE DESIGNATION
PREFIX WITH A1029

EL5CP094

Figure 16. Rawin Receiver R-301()/GMD-1 (Sheet 1 of 2).

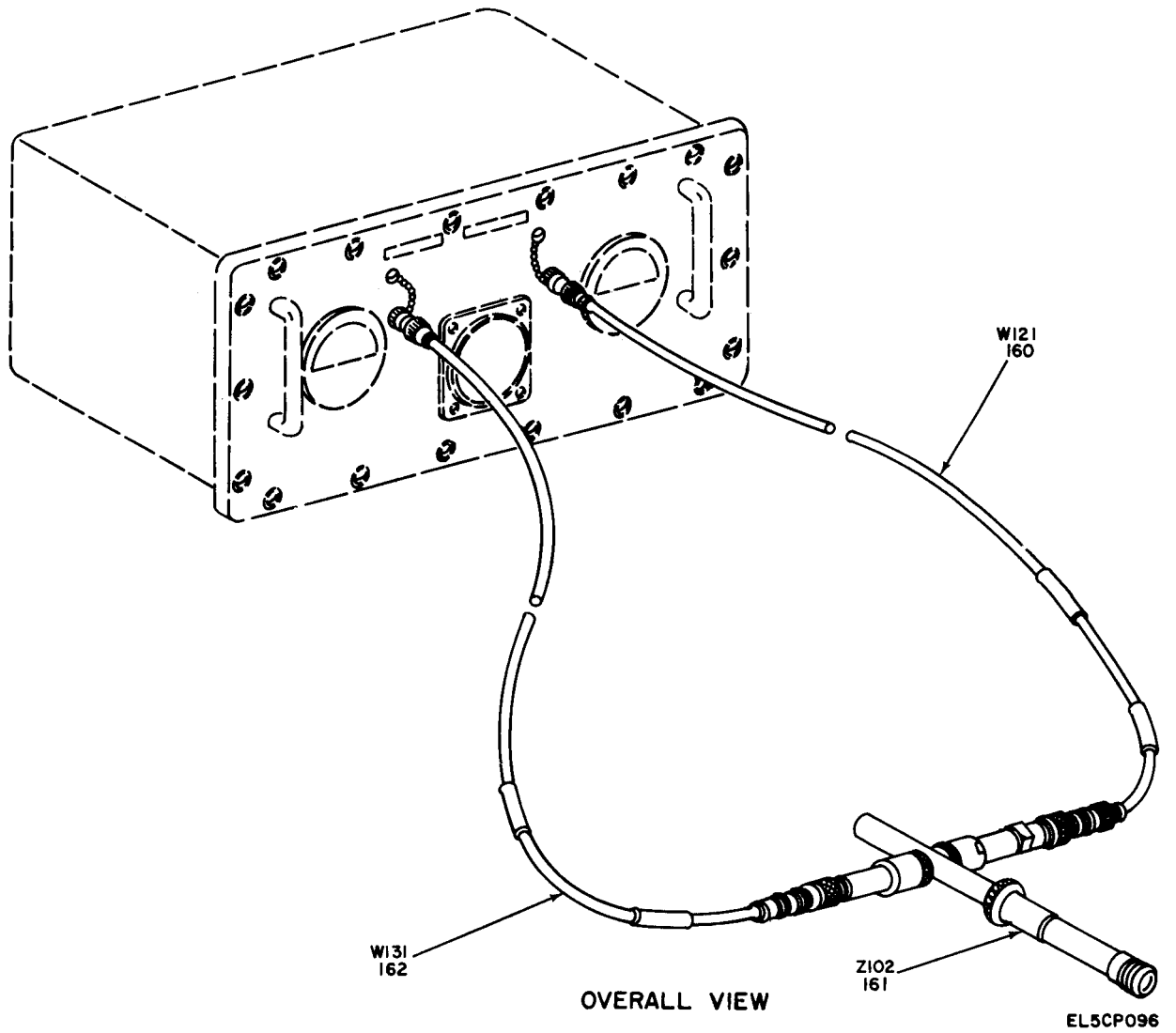


Figure 16. Rawin Receiver R-301()/GMD-1 (Sheet 2 of 2).

SECTION II						TM11-6660-206-20P			
(1)	(2)	(3)	(4)	(5)	(6)	(7)	(8)		
ILLUSTRATION									
(A)	(B)								
FIG	ITEM	SMR	NATIONAL	PART	DESCRIPTION	USABLE	QTY	ON	INC
NO	NO	CODE	STOCK	NUMBER	FSCM	CODE	IN	CODE	IN
			NUMBER				UNIT		UNIT
					GROUP 21 RAWIN RECEIVER				
					R-301()/GMD-1				
16	34	XDOZZ		JAN12AT7WA	81349			EA	1
16	38	XDOZZ		JAN12AU7-6189	81349			EA	4
16	40	XDOZZ		JAN12AX7QA	81349			EA	5
16	44	XDOZZ		JAN6005-6AQ5W	81349			EA	3
16	56	XDOZZ		JAN5654-6AK5W	81349			EA	1
16	57	XDOZZ		JAN0B2WA	81349			EA	1
16	58	XDOZZ		JAN6X4WA	81349			EA	1
16	65	XDOZZ		JAN6A57G	81349			EA	1
16	66	XDOZZ		JAN5U4G	81349			EA	1
16	78	XDOZZ		JAN5726-6A15W	81349			EA	1
16	80	PAOZZ	5920-00-010-6652	F02A250V3A	81349			EA	4
16	160	PAOFF	6660-00-042-8404	SCD68284	80063			EA	1
16	162	XDOFF		SMD23604	80063			EA	1

NATIONAL STOCK NUMBER AND PART NUMBER INDEX

STOCK NUMBER	FIGURE NO	ITEM NO	STOCK NUMBER	FIGURE NO	ITEM NO
7530-00-001-4101	7	19	5975-00-284-8302	12	30
4310-00-006-1818	14	98	5975-00-284-8303	12	34
5920-00-010-6652	16	80	5975-00-284-8304	12	34
6660-00-025-3908	12	12	5305-00-290-2535	12	13
6660-00-042-8404	16	160	5330-00-298-7303	3	44
5305-00-050-9229	13	9	5355-00-301-4892	8	1
5305-00-054-6652	3	35	6650-00-400-4977	10	1
5305-00-059-9251	6	10	6660-00-404-2998	13	24
5305-00-082-6736	13	9	5306-00-407-9254	13	17
5995-00-091-0465	1	9	6660-00-451-5379	13	12
5340-00-138-0206	12	4	6660-00-456-0832	13	3
5306-00-140-2073	13	6	5310-00-477-6768	13	11
5306-00-140-2073	13	6	6650-00-482-6155	11	3
6240-00-143-3049	8	17	5920-00-557-5033	4	22
6240-00-143-3050	15	49	5975-00-567-2332	12	24
6650-00-150-1761	11	2	6650-00-568-9987	1	19
6660-00-170-8777	1	10	5355-00-579-2896	6	7
5305-00-175-3230	13	23			
5999-00-186-3976	10	1			
6660-00-191-9773	1	8	5120-00-596-8653	1	24
6240-00-223-9100	4	5	5999-00-636-6520	13	16
6240-00-223-9100	8	7	6660-00-681-9749	2	2
6660-00-240-3858	2	1	5920-00-686-9514	5	12
5975-00-240-3860	10	1	5920-00-686-9514	9	5
5920-00-243-3787	5	11	5930-00-689-6786	14	85
6660-00-256-8328	1	2	6660-00-705-5884	13	26
5985-00-257-4799	13	25	6660-00-726-0128	13	2
6660-00-268-0186	1	3	6660-00-752-5801	1	2
6660-00-271-5621	1	5	6660-00-774-8411	13	1
5920-00-280-5002	8	10	6660-00-775-3604	1	6
5120-00-284-1388	1	25	6660-00-884-7577	1	11
5920-00-284-6787	4	20	5305-00-888-6132	13	18
5920-00-284-6787	15	64	5305-00-888-6133	13	21
5975-00-284-8299	12	29	5310-00-933-8120	13	15
5975-00-284-8301	12	32	5310-00-984-7042	13	10

PART NUMBER	FSCM	FIGURE NO	ITEM NO	PART NUMBER	FSCM	FIGURE NO	ITEM NO
AB-159B/GMD-1	80058	1	2	MS51957-63	96906	13	14
AB-159D/GMD-1	80058	1	2	MS51959-114	96906	13	9
AB159C/GMD-1	80058	1	2	NE51	08108	4	5
AB159EGMD1	80058	1	2	NE51	08108	4	7
AN565DC8H6	88044	6	10	R-301/GMD-1	80058	1	7
AN565DC8H6	88044	8	14	R-301B/GMD-1	80058	1	7
AS462AGMD1	80058	1	1	R-301B/GMD-1	80058	1	7
AS462BGMD-1	80058	1	1	R-301C/GMD-1	80058	1	7
AS462GMD1	80058	1	1	SCB176342	80063	13	16
C-577D/GMD-1	80058	1	3	SCB176512	80063	10	1
CX121675	80058	1	8	SCB176514	80063	10	2
C577B/GMD-1	80058	1	3	SCB84307	80063	12	12
F020A250V3A	81349	15	80	SCB93176GR3	80063	13	21
F02A250V5A	81349	4	20	SCB93176GR5	80063	13	18
F02A50V5A	81349	15	64	SCB93177	80063	13	17
F03A250V10A	81349	5	11	SCB93534	80063	1	24
F03A250V10A	81349	8	10	SCB98535	80063	13	6
F03A250V8A	81349	4	22	SCB98535	80063	13	6
F09A250V20A	23667	9	5	SCC93051GR1	80063	13	25
F09A250V20A	81349	5	12	SCC93051GR2	80063	13	4
JAB12AX7QA	81349	16	40	SCC93153	80063	1	5
JANOBWA	81349	16	57	SCC93895	80063	3	44
JAN12AU7-6189	81349	16	38	SCC98532	80063	13	13
JAN12AT7WA	81349	16	34	SCC98578	80063	8	1
JAN5U4G	81349	16	66	SCD28552	80063	1	23
JAN526-6AL5W	81349	16	78	SCD68284	80063	16	160
JAN5654-6AK5W	81349	16	56	SCD84302GR1	80063	12	29
JAN6A57G	81349	16	65	SCD84302GR2	80063	12	30
JAN6X4WA	81349	16	58	SCD84302GR3	80063	12	31
JAN6005-6AQW	81349	16	44	SCD84302GR4	80063	12	32
MS15579-2	96906	15	49	SCD84303	80063	12	33
MS15579-4	96906	8	17	SCD84304	80063	12	34
MS21318-14	96906	13	23	SCD84305	80063	12	24
MS25165-1	96906	6	8	SCD87937	80063	1	22
MS25165-1	96906	8	15	SCD93081	80063	14	98
MS35338-138	96906	13	15	SCD93154	80063	13	24
MS35338-141	96906	13	10	SCD93535	80063	1	25
MS35494-282	96906	12	13	SCD93543	80063	1	10
MS35649-2384	96906	13	11	SCD93575	80063	1	9
MS51957-28	96906	3	35	SCD93578	80063	1	12

PART NUMBER	NATIONAL STOCK NUMBER AND PART NUMBER			INDEX PART NUMBER	FSCM	FIGURE NO	ITEM NO
	FSCM	FIGURE NO	ITEM NO				
SCD93643	80063	1	11	SMD282260	80063	6	12
SCD93646	80063	13	2	SMD282267	80063	6	13
SCD98529	80063	13	12	SMD282564	80063	2	1
SMB109142	80063	14	85	SMD282567	80063	3	39
SMB12357	80063	3	33	SMD282589	80063	13	1
SMB282264	80063	6	7	SMD282640	80063	13	3
SMB282309	80063	7	19	SMD282648	80063	11	3
SMC198195	80063	1	1	SMD391000	80063	1	13
SMC282647	80063	1	19	SMD391018	80063	1	16
SMC282647-1	80063	11	1	SMD391043	80063	1	14
SMC584950	80063	4	44	SMD391060	80063	1	18
SMC584992	80063	11	2	SMD391083	80063	1	17
SMD19822	80063	13	26	SMD391145	80063	1	15
SMD23604	80063	16	162	SMD584973	80063	1	3
SMD272251	80063	1	6	SMD484976	80063	6	1
SMD282253	80063	1	7	TS538()U	80063	1	20
SMD282255	80063	2	2				

By Order of the Secretary of the Army:

E. C. MEYER
General, United States Army
Chief of Staff

Official:

J. C. PENNINGTON
Major General, United States Army
The Adjutant General

DISTRIBUTION:

Active Army:

HISA (Ft Monmouth) (21)
USAINSCOM (2)
COE (1)
TSG (1)
USAARENBD (1)
DARCOM (1)
TRADOC (2)
OS Maj Comd (4)
TECOM (2)
USACC (4)
MDW (1)
Armies (2)
Corps (2)
Svc Colleges (1)
USASIGS (5)
USAADS (2)
USAFAS (2)
USAARMS (2)
USAIS (2)
USAES (2)
USAICS (3)
MAAG (1)
USARMIS (1)
USAERDAA (1)
USAERDAW (1)
Ft Gordon (10)
Ft Carson (5)
Army Dep (1) except
LEAD (14)
SAAD (30)
TOAD (14)
SHAD (3)

Ft Gillem (10)
USA Dep (1)
Sig Sec USA Dep (1)
Ft Richardson (CERCOM Ofc) (2)
Units org under fol TOE:
6-100 (2)
6-185 (2)
6-186 (2)
6-200 (2)
6-201 (2)
6-300 (2)
6-302 (2)
6-525 (2)
6-526 (2)
6-575 (2)
6-576 (2)
6-700 (2)
6-701 (2)
7 (2)
7-100 (2)
11-117 (2)
11-500 (AA-AC) (2)
17 (2)
29-134 (2)
29-136 (2)
29-207 (2)
29-610 (2)
37 (2)
37-100 (2)
39-51 (2)
57 (2)

NG: NONE

USAR: NONE

For explanations of abbreviations used see AR 310-50.

RECOMMENDED CHANGES TO EQUIPMENT TECHNICAL MANUALS



SOMETHING WRONG WITH THIS MANUAL?

THEN... JOT DOWN THE DOPE ABOUT IT ON THIS FORM, TEAR IT OUT, FOLD IT AND DROP IT IN THE MAIL!

FROM: (YOUR UNIT'S COMPLETE ADDRESS)

Commander
Stateside Army Depot
ATTN: AMSTA-US
Stateside, N.J. 07703

DATE 10 July 1975

PUBLICATION NUMBER

TM 11-5840-340-20P

DATE

23 Jan 78

TITLE

Radar Set AN/PRC-76

BE EXACT... PIN-POINT WHERE IT IS

IN THIS SPACE TELL WHAT IS WRONG AND WHAT SHOULD BE DONE ABOUT IT:

PAGE NO.	PARA-GRAPH	FIGURE NO.	TABLE NO.
33			
44		19	
45			

For item 2, change the NSN to read: 5835-00-134-9186.
Reason: Accuracy.

Identify the cover on the junction box (item no. 5).
Reason: It is a separate item and is not called out on figure 19.

Add the cover of the junction box as an item in the listing for figure 19.
Reason: Same as above.

TEAR ALONG DOTTED LINE

TYPED NAME, GRADE OR TITLE, AND TELEPHONE NUMBER

SSG I. M. DeSpirito 999-1776

SIGN HERE:

SSG I. M. DeSpirito

DA FORM 2028-2
1 AUG 74

P.S.--IF YOUR OUTFIT WANTS TO KNOW ABOUT YOUR MANUAL "FIND," MAKE A CARBON COPY OF THIS AND GIVE IT TO YOUR HEADQUARTERS.

RECOMMENDED CHANGES TO EQUIPMENT TECHNICAL PUBLICATIONS

SOMETHING WRONG

WITH THIS PUBLICATION?



THEN . . . JOT DOWN THE DOPE ABOUT IT ON THIS FORM, FOLD IT, AND DROP IT IN THE MAIL!

FROM: (PRINT YOUR UNIT'S COMPLETE ADDRESS)

DATE SENT

PUBLICATION NUMBER

PUBLICATION DATE

PUBLICATION TITLE

BE EXACT . . . PIN-POINT WHERE IT IS

IN THIS SPACE TELL WHAT IS WRONG AND WHAT SHOULD BE DONE ABOUT IT:

PAGE NO.

PARA-GRAPH

FIGURE NO.

TABLE NO.

PRINTED NAME, GRADE OR TITLE, AND TELEPHONE NUMBER

SIGN HERE

THE METRIC SYSTEM AND EQUIVALENTS

WEIGHT MEASURE

1 Centimeter = 10 Millimeters = 0.01 Meters = 0.3937 Inches
 1 Meter = 100 Centimeters = 1000 Millimeters = 39.37 Inches
 1 Kilometer = 1000 Meters = 0.621 Miles

WEIGHTS

1 Gram = 0.001 Kilograms = 1000 Milligrams = 0.035 Ounces
 1 Kilogram = 1000 Grams = 2.2 lb.
 1 Metric Ton = 1000 Kilograms = 1 Megagram = 1.1 Short Tons

LIQUID MEASURE

1 Milliliter = 0.001 Liters = 0.0338 Fluid Ounces
 1 Liter = 1000 Milliliters = 33.82 Fluid Ounces

SQUARE MEASURE

1 Sq. Centimeter = 100 Sq. Millimeters = 0.155 Sq. Inches
 1 Sq. Meter = 10,000 Sq. Centimeters = 10.76 Sq. Feet
 1 Sq. Kilometer = 1,000,000 Sq. Meters = 0.386 Sq. Miles

CUBIC MEASURE

1 Cu. Centimeter = 1000 Cu. Millimeters = 0.06 Cu. Inches
 1 Cu. Meter = 1,000,000 Cu. Centimeters = 35.31 Cu. Feet

TEMPERATURE

$5/9(^{\circ}\text{F} - 32) = ^{\circ}\text{C}$
 212° Fahrenheit is equivalent to 100° Celsius
 90° Fahrenheit is equivalent to 32.2° Celsius
 32° Fahrenheit is equivalent to 0° Celsius
 $9/5^{\circ}\text{C} + 32 = ^{\circ}\text{F}$

APPROXIMATE CONVERSION FACTORS

TO CHANGE	TO	MULTIPLY BY
Inches	Centimeters	2.540
Feet	Meters	0.305
Yards	Meters	0.914
Miles	Kilometers	1.609
Square Inches	Square Centimeters	6.451
Square Feet	Square Meters	0.093
Square Yards	Square Meters	0.836
Square Miles	Square Kilometers	2.590
Acres	Square Hectometers	0.405
Cubic Feet	Cubic Meters	0.028
Cubic Yards	Cubic Meters	0.765
Fluid Ounces	Milliliters	29.573
its	Liters	0.473
arts	Liters	0.946
allons	Liters	3.785
Ounces	Grams	28.349
Pounds	Kilograms	0.454
Short Tons	Metric Tons	0.907
Pound-Feet	Newton-Meters	1.356
Pounds per Square Inch	Kilopascals	6.895
Miles per Gallon	Kilometers per Liter	0.425
Miles per Hour	Kilometers per Hour	1.609

TO CHANGE	TO	MULTIPLY BY
Centimeters	Inches	0.394
Meters	Feet	3.280
Meters	Yards	1.094
Kilometers	Miles	0.621
Square Centimeters	Square Inches	0.155
Square Meters	Square Feet	10.764
Square Meters	Square Yards	1.196
Square Kilometers	Square Miles	0.386
Square Hectometers	Acres	2.471
Cubic Meters	Cubic Feet	35.315
Cubic Meters	Cubic Yards	1.308
Milliliters	Fluid Ounces	0.034
Liters	Pints	2.113
Liters	Quarts	1.057
ers	Gallons	0.264
ms	Ounces	0.035
ograms	Pounds	2.205
Metric Tons	Short Tons	1.102
Newton-Meters	Pounds-Feet	0.738
Kilopascals	Pounds per Square Inch	0.145
ometers per Liter	Miles per Gallon	2.354
ometers per Hour	Miles per Hour	0.621



PIN: 016177-000